

AEG-1/MTDH Recombinant Matched Antibody Pair, PBS Only

Catalog Number: **MP01497-1**

Capture Antibody Information

Catalog Number:

84686-1-PBS

Host:

Rabbit

Isotype:

IgG

Purification Method:

Protein A purification

Clone ID:

242110C11

Reactivity:

human

Immunogen Catalog Number:

Ag4840

Conjugate:

Unconjugated

Full name:

metadherin

Gene ID:

92140

Detection Antibody Information

Catalog Number:

84686-2-PBS

Host:

Rabbit

Isotype:

IgG

Purification Method:

Protein A purification

Clone ID:

242110E1

Reactivity:

human

GenBank:

BC045642

Immunogen Catalog Number:

Ag4840

Conjugate:

Unconjugated

Full name:

metadherin

Gene ID:

92140

Applications

Tested Applications:

Cytometric bead array, Sandwich ELISA

Range:

0.781-100 ng/mL (Cytometric Bead Array)
39.1-2500 pg/mL (Sandwich ELISA)

Recommended Dilutions:

It is recommended that this reagent should be titrated in each testing system to obtain optimal results.

Product Information

MP01497-1 targets AEG-1/MTDH in immunoassays as a matched antibody pair. Validated in Cytometric bead array, Sandwich ELISA.

Capture antibody: AEG-1 Recombinant antibody, PBS Only (Capture) 84686-1-PBS (242110C11). 100 µg. Concentration 1 mg/mL.

Detection antibody: AEG-1 Recombinant antibody, PBS Only (Detector) 84686-2-PBS (242110E1). 100 µg. Concentration 1 mg/mL.

Unconjugated rabbit recombinant monoclonal antibody pair in PBS only storage buffer at a concentration of 1 mg/mL, ready for conjugation. Created using Proteintech's proprietary in-house recombinant technology. Recombinant production enables unrivalled batch-to-batch consistency, easy scale-up, and future security of supply.

Matched antibody pairs are designed for use in a variety of assays and platforms that require matched antibody pairs.

Antibody use should be optimized for each application and assay.

Storage

Storage:

Store at -80°C.

Storage buffer:

PBS only

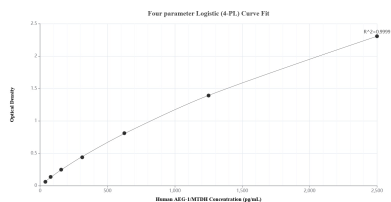
For technical support and original validation data for this product please contact:

T: 1 (888) 4PTGLAB (1-888-478-4522) (toll free in USA), or 1(312) 455-8498 (outside USA)

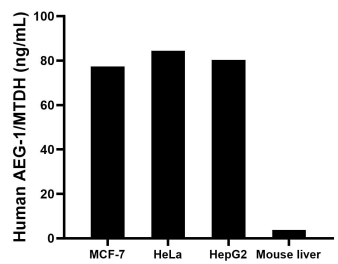
E: proteintech@ptglab.com
W: ptglab.com

This product is exclusively available under Proteintech Group brand and is not available to purchase from any other manufacturer.

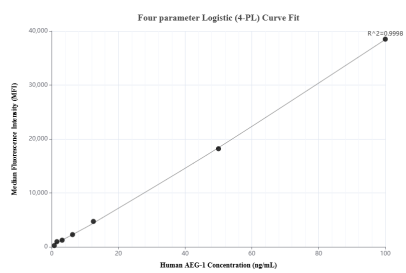
Selected Validation Data



Sandwich ELISA standard curve of MP01497-1, Human AEG-1/MTDH Recombinant Matched Antibody Pair - PBS only. 84686-1-PBS was coated to a plate as the capture antibody and incubated with serial dilutions of standard Ag4840. 84686-2-PBS was HRP conjugated as the detection antibody. Range: 39.1-2500 pg/mL



The mean AEG-1/MTDH concentration was determined to be 77.3 ng/mL in MCF-7 cell extract based on a 1.2 mg/mL extract load, 84.5 ng/mL in HeLa cell extract based on a 1.3 mg/mL extract load, 80.3 ng/mL in HepG2 cell extract based on a 3.3 mg/mL extract load and 3.8 ng/mL in mouse liver tissue extract based on a 3.7 mg/mL extract load.



Cytometric bead array standard curve of MP01497-1, AEG-1/MTDH Recombinant Matched Antibody Pair, PBS Only. Capture antibody: 84686-1-PBS. Detection antibody: 84686-2-PBS. Standard: Ag4840. Range: 0.781-100 ng/mL