

VEGFB Recombinant Matched Antibody Pair, PBS Only

Catalog Number: **MP01517-2**

Capture Antibody Information

Catalog Number:

84734-4-PBS

Host:

Rabbit

Isotype:

IgG

Purification Method:

Protein A purification

Clone ID:

242024E8

Reactivity:

human

Conjugate:

Unconjugated

Full name:

vascular endothelial growth factor B

Gene ID:

7423

Detection Antibody Information

Catalog Number:

84734-2-PBS

Host:

Rabbit

Isotype:

IgG

Purification Method:

Protein A purification

Clone ID:

242024F10

Reactivity:

human

GenBank:

BC008818

Conjugate:

Unconjugated

Full name:

vascular endothelial growth factor B

Gene ID:

7423

Applications

Tested Applications:

Sandwich ELISA

Range:

0.156-10 ng/mL (Sandwich ELISA)

Recommended Dilutions:

It is recommended that this reagent should be titrated in each testing system to obtain optimal results.

Product Information

MP01517-2 targets VEGFB in immunoassays as a matched antibody pair. Validated in Sandwich ELISA.

Capture antibody: VEGFB Recombinant antibody, PBS Only (Capture) 84734-4-PBS (242024E8). 100 µg. Concentration 1 mg/mL.

Detection antibody: VEGFB Recombinant antibody, PBS Only (Detector) 84734-2-PBS (242024F10). 100 µg. Concentration 1 mg/mL.

Unconjugated rabbit recombinant monoclonal antibody pair in PBS only storage buffer at a concentration of 1 mg/mL, ready for conjugation. Created using Proteintech's proprietary in-house recombinant technology. Recombinant production enables unrivalled batch-to-batch consistency, easy scale-up, and future security of supply.

Matched antibody pairs are designed for use in a variety of assays and platforms that require matched antibody pairs.

Antibody use should be optimized for each application and assay.

Storage

Storage:

Store at -80°C.

Storage buffer:

PBS only

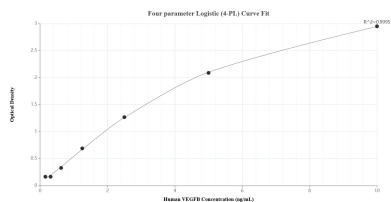
For technical support and original validation data for this product please contact:

T: 1 (888) 4PTGLAB (1-888-478-4522) (toll free in USA), or 1(312) 455-8498 (outside USA)

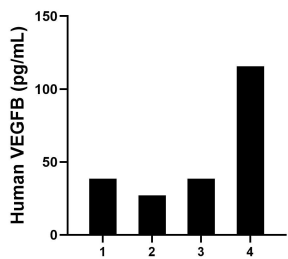
E: proteintech@ptglab.com
W: ptglab.com

This product is exclusively available under Proteintech Group brand and is not available to purchase from any other manufacturer.

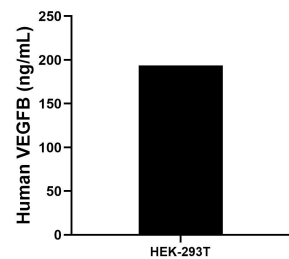
Selected Validation Data



Sandwich ELISA standard curve of MP01517-2, Human VEGFB Recombinant Matched Antibody Pair - PBS only. 84734-4-PBS was coated to a plate as the capture antibody and incubated with serial dilutions of standard Eg2458. 84734-2-PBS was HRP conjugated as the detection antibody. Range: 0.156-10 ng/mL



Serum of four individual healthy human donors was measured. The VEGFB concentration of detected samples was determined to be 54.97 pg/mL with a range of 27.10-115.74 pg/mL



The mean VEGFB concentration was determined to be 193.78 ng/mL in HEK-293T cell extract based on a 3.20 mg/mL extract load.