

DR5 Recombinant Matched Antibody Pair, PBS Only

Catalog Number: **MP01541-1**

Capture Antibody Information

Catalog Number:
84784-3-PBS
Host:
Rabbit
Isotype:
IgG
Purification Method:
Protein A purification

Clone ID:
242319H8
Reactivity:
human

Conjugate:
Unconjugated
Full name:
tumor necrosis factor receptor superfamily, member 10b
Gene ID:
8795

Detection Antibody Information

Catalog Number:
84784-1-PBS
Host:
Rabbit
Isotype:
IgG
Purification Method:
Protein A purification

Clone ID:
242319B12
Reactivity:
human
GenBank:
BC001281

Conjugate:
Unconjugated
Full name:
tumor necrosis factor receptor superfamily, member 10b
Gene ID:
8795

Applications

Tested Applications:
Cytometric bead array, Sandwich ELISA

Range:
0.625-20 ng/mL (Cytometric Bead Array)
9.77-625 pg/mL (Sandwich ELISA)

Recommended Dilutions:
It is recommended that this reagent should be titrated in each testing system to obtain optimal results.

Product Information

MP01541-1 targets DR5 in immunoassays as a matched antibody pair. Validated in Cytometric bead array, Sandwich ELISA.

Capture antibody: TNFRSF10B Recombinant antibody, PBS Only (Capture) 84784-3-PBS (242319H8). 100 µg. Concentration 1 mg/mL.

Detection antibody: TNFRSF10B Recombinant antibody, PBS Only (Detector) 84784-1-PBS (242319B12). 100 µg. Concentration 1 mg/mL.

Unconjugated rabbit recombinant monoclonal antibody pair in PBS only storage buffer at a concentration of 1 mg/mL, ready for conjugation. Created using Proteintech's proprietary in-house recombinant technology. Recombinant production enables unrivalled batch-to-batch consistency, easy scale-up, and future security of supply.

Matched antibody pairs are designed for use in a variety of assays and platforms that require matched antibody pairs.

Antibody use should be optimized for each application and assay.

Storage

Storage:
Store at -80°C.
Storage buffer:
PBS only

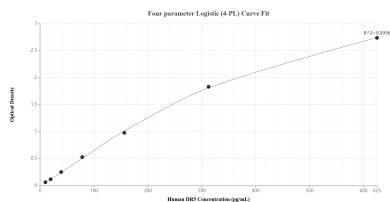
For technical support and original validation data for this product please contact:

T: 1 (888) 4PTGLAB (1-888-478-4522) (toll free in USA), or 1(312) 455-8498 (outside USA)

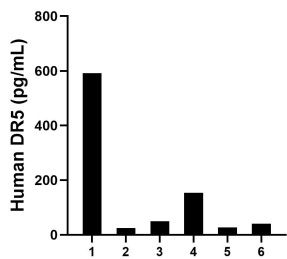
E: proteintech@ptglab.com
W: ptglab.com

This product is exclusively available under Proteintech Group brand and is not available to purchase from any other manufacturer.

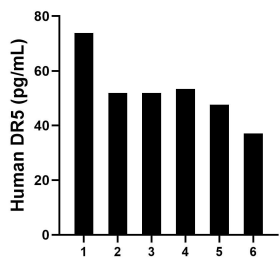
Selected Validation Data



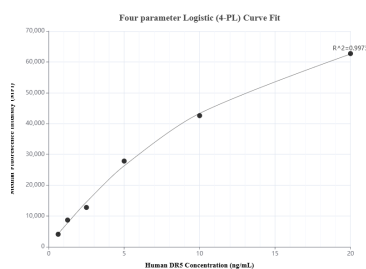
Sandwich ELISA standard curve of MP01541-1, Human DR5 Recombinant Matched Antibody Pair - PBS only. 84784-3-PBS was coated to a plate as the capture antibody and incubated with serial dilutions of standard Eg1648. 84784-1-PBS was HRP conjugated as the detection antibody. Range: 9.77-625 pg/mL



Serum of six individual healthy human donors was measured. The DR5 concentration of detected samples was determined to be 147.8 pg/mL with a range of 25.4-591.3 pg/mL



Plasma of six individual healthy human donors was measured. The DR5 concentration of detected samples was determined to be 52.6 pg/mL with a range of 37.1-73.8 pg/mL



Cytometric bead array standard curve of MP01541-1, DR5 Recombinant Matched Antibody Pair, PBS Only. Capture antibody: 84784-3-PBS. Detection antibody: 84784-1-PBS. Standard: Eg1648. Range: 0.625-20 ng/mL