

For Research Use Only



Rat IGF1 Recombinant Matched Antibody Pair, PBS Only

Catalog Number:MP01547-3

Capture Antibody Information

Catalog Number:
84782-6-PBS

Host:
Rabbit

Isotype:
IgG

Purification Method:
Protein A purification

Clone ID:
241890G4

Reactivity:
rat

Immunogen Catalog Number:
Eg1976

Conjugate:
Unconjugated

Full name:
insulin-like growth factor 1

Gene ID:
24482

Detection Antibody Information

Catalog Number:
84782-1-PBS

Host:
Rabbit

Isotype:
IgG

Purification Method:
Protein A purification

Clone ID:
241890A11

Reactivity:
rat

GenBank:
AAA41386

Immunogen Catalog Number:
Eg1976

Conjugate:
Unconjugated

Full name:
insulin-like growth factor 1

Gene ID:
24482

Applications

Tested Applications:
Sandwich ELISA

Range:
3.91-250 pg/mL (Sandwich ELISA)

Recommended Dilutions:
It is recommended that this reagent should be titrated in each testing system to obtain optimal results.

Product Information

MP01547-3 targets IGF1 in immunoassays as a matched antibody pair. Validated in Sandwich ELISA.

Capture antibody: Rat IGF1 Recombinant antibody, PBS Only (Capture) 84782-6-PBS (241890G4). 100 µg. Concentration 1 mg/mL.

Detection antibody: Rat IGF1 Recombinant antibody, PBS Only (Detector) 84782-1-PBS (241890A11). 100 µg. Concentration 1 mg/mL.

Unconjugated rabbit recombinant monoclonal antibody pair in PBS only storage buffer at a concentration of 1 mg/mL, ready for conjugation. Created using Proteintech's proprietary in-house recombinant technology. Recombinant production enables unrivalled batch-to-batch consistency, easy scale-up, and future security of supply.

Matched antibody pairs are designed for use in a variety of assays and platforms that require matched antibody pairs.

Antibody use should be optimized for each application and assay.

Storage

Storage:
Store at -80°C.
Storage buffer:
PBS only

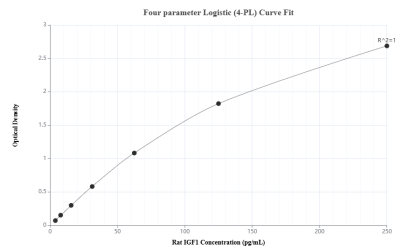
For technical support and original validation data for this product please contact:

T: 1 (888) 4PTGLAB (1-888-478-4522) (toll free in USA), or 1(312) 455-8498 (outside USA)

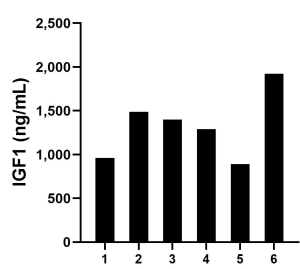
E: proteintech@ptglab.com
W: ptglab.com

This product is exclusively available under Proteintech Group brand and is not available to purchase from any other manufacturer.

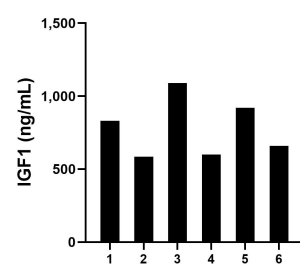
Selected Validation Data



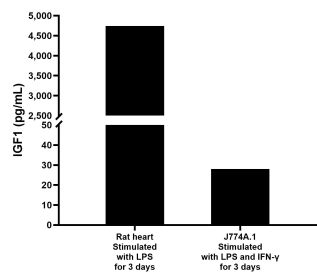
Sandwich ELISA standard curve of MP01547-3, Rat IGF1 Recombinant Matched Antibody Pair - PBS only. 84782-6-PBS was coated to a plate as the capture antibody and incubated with serial dilutions of standard Eg1976. 84782-1-PBS was HRP conjugated as the detection antibody. Range: 3.91-250 pg/mL



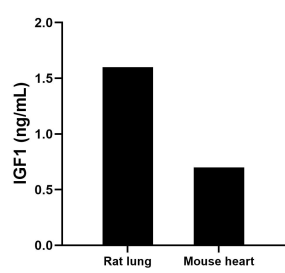
Serum of six rats was measured. The IGF1 concentration of detected samples was determined to be 1,325.1 pg/mL with a range of 892.6 - 1,922.3 ng/mL



Serum of six mice was measured. The IGF1 concentration of detected samples was determined to be 780.6 pg/mL with a range of 585.0 - 1,089.6 ng/mL



Rat heart tissue (chopped in 1-2 mm pieces in 30 mL of medium) was cultured for 3 days in RPMI supplemented with 10% fetal calfserum and 50 μ M β -mercaptoethanol and stimulated with 2.5 ng/mL LPS. J774A.1 cells (1×10^6 cells/mL) were cultured in DMEM supplemented with 10% fetal bovine serum, 20 ng/mL IFN- γ , and 1.0 μ g/mL LPS for 3 days. Aliquots of the cell culture supernates were removed, assayed for levels of IGF1, and measured 4,740.2 pg/mL in rat heart cell



Rat lung tissue and mouse heart tissue were rinsed with 1X PBS to remove excess blood, homogenized in 20 mL of 1X PBS and stored overnight at $\leq -20^\circ\text{C}$. Homogenates were thawed and centrifuged for 5 minutes at 5000 x g. Homogenates were assayed for IGF1 and measured 1.6 ng/mL in rat lung tissue homogenate based on a 0.3 mg/mL homogenate load, and 0.7 ng/mL in mouse heart tissue homogenate based on a 1.4 mg/mL homogenate load.