

SPTAN1 Recombinant Matched Antibody Pair, PBS Only

Catalog Number: **MP01560-3**

Capture Antibody Information

Catalog Number:
84761-4-PBS
Host:
Rabbit
Isotype:
IgG
Purification Method:
Protein A purification

Clone ID:
242104F11
Reactivity:
human
Immunogen Catalog Number:
Ag36472

Conjugate:
Unconjugated
Full name:
spectrin, alpha, non-erythrocytic 1 (alpha-fodrin)
Gene ID:
6709

Detection Antibody Information

Catalog Number:
84761-3-PBS
Host:
Rabbit
Isotype:
IgG
Purification Method:
Protein A purification

Clone ID:
242104D6
Reactivity:
human
GenBank:
NM_003127.3
Immunogen Catalog Number:
Ag36472

Conjugate:
Unconjugated
Full name:
spectrin, alpha, non-erythrocytic 1 (alpha-fodrin)
Gene ID:
6709

Applications

Tested Applications:
Sandwich ELISA

Range:
78.1-5000 pg/mL (Sandwich ELISA)

Recommended Dilutions:
It is recommended that this reagent should be titrated in each testing system to obtain optimal results.

Product Information

MP01560-3 targets SPTAN1 in immunoassays as a matched antibody pair. Validated in Sandwich ELISA.

Capture antibody: SPTAN1 Recombinant antibody, PBS Only (Capture) 84761-4-PBS (242104F11). 100 µg. Concentration 1 mg/mL.

Detection antibody: SPTAN1 Recombinant antibody, PBS Only (Detector) 84761-3-PBS (242104D6). 100 µg. Concentration 1 mg/mL.

Unconjugated rabbit recombinant monoclonal antibody pair in PBS only storage buffer at a concentration of 1 mg/mL, ready for conjugation. Created using Proteintech's proprietary in-house recombinant technology. Recombinant production enables unrivalled batch-to-batch consistency, easy scale-up, and future security of supply.

Matched antibody pairs are designed for use in a variety of assays and platforms that require matched antibody pairs.

Antibody use should be optimized for each application and assay.

Storage

Storage:
Store at -80°C.
Storage buffer:
PBS only

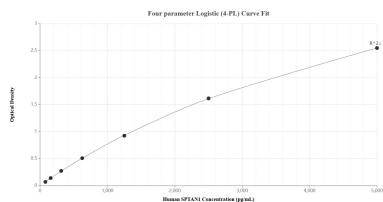
For technical support and original validation data for this product please contact:

T: 1 (888) 4PTGLAB (1-888-478-4522) (toll free in USA), or 1(312) 455-8498 (outside USA)

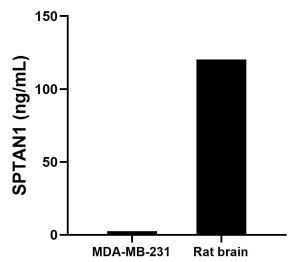
E: proteintech@ptglab.com
W: ptglab.com

This product is exclusively available under Proteintech Group brand and is not available to purchase from any other manufacturer.

Selected Validation Data



Sandwich ELISA standard curve of MP01560-3, Human SPTAN1 Recombinant Matched Antibody Pair - PBS only. 84761-4-PBS was coated to a plate as the capture antibody and incubated with serial dilutions of standard Ag36472. 84761-3-PBS was HRP conjugated as the detection antibody. Range: 78.1-5000 pg/mL.



The mean SPTAN1 concentration was determined to be 2.5 ng/mL in MDA-MB-231 cell extract based on a 1.9 mg/mL extract load and 120.3 ng/mL in rat brain tissue extract based on a 1.6 mg/mL extract load.