

Mouse Endoglin/CD105

Recombinant Matched Antibody Pair, PBS Only

Catalog Number: **MP01582-2**

Capture Antibody Information

Catalog Number:

84807-2-PBS

Host:

Rabbit

Isotype:

IgG

Purification Method:

Protein A purification

Clone ID:

242305E7

Reactivity:

mouse

Conjugate:

Unconjugated

Full name:

endoglin

Gene ID:

13805

Detection Antibody Information

Catalog Number:

84807-3-PBS

Host:

Rabbit

Isotype:

IgG

Purification Method:

Protein A purification

Clone ID:

242305G10

Reactivity:

mouse

GenBank:

NM_007932.2

Conjugate:

Unconjugated

Full name:

endoglin

Gene ID:

13805

Applications

Tested Applications:Cytometric bead array, Sandwich
ELISA**Range:**0.625-80 ng/mL (Cytometric Bead
Array)
78.1-5000 pg/mL (Sandwich ELISA)**Recommended Dilutions:**It is recommended that this reagent
should be titrated in each testing
system to obtain optimal results.

Product Information

MP01582-2 targets Endoglin/CD105 in immunoassays as a matched antibody pair. Validated in Cytometric bead array, Sandwich ELISA.

Capture antibody: Mouse Endoglin/CD105 Recombinant antibody, PBS Only (Capture) 84807-2-PBS (242305E7). 100 µg. Concentration 1 mg/mL.

Detection antibody: Mouse Endoglin/CD105 Recombinant antibody, PBS Only (Detector) 84807-3-PBS (242305G10). 100 µg. Concentration 1 mg/mL.

Unconjugated rabbit recombinant monoclonal antibody pair in PBS only storage buffer at a concentration of 1 mg/mL, ready for conjugation. Created using Proteintech's proprietary in-house recombinant technology. Recombinant production enables unrivalled batch-to-batch consistency, easy scale-up, and future security of supply.

Matched antibody pairs are designed for use in a variety of assays and platforms that require matched antibody pairs.

Antibody use should be optimized for each application and assay.

Storage

Storage:

Store at -80°C.

Storage buffer:

PBS only

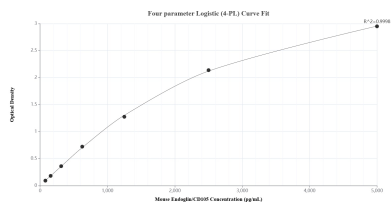
For technical support and original validation data for this product please contact:

T: 1 (888) 4PTGLAB (1-888-478-4522) (toll free
in USA), or 1(312) 455-8498 (outside USA)

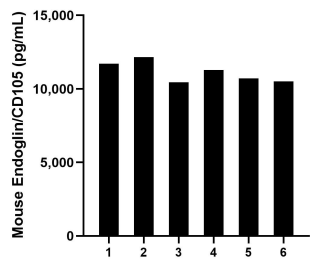
E: proteintech@ptglab.com
W: ptglab.com

This product is exclusively available under Proteintech Group brand and is not available to purchase from any other manufacturer.

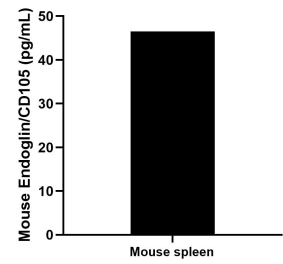
Selected Validation Data



Sandwich ELISA standard curve of MP01582-2, Mouse Endoglin/CD105 Recombinant Matched Antibody Pair - PBS only. 84807-2-PBS was coated to a plate as the capture antibody and incubated with serial dilutions of standard Eg1292. 84807-3-PBS was HRP conjugated as the detection antibody. Range: 78.1-5000 pg/mL



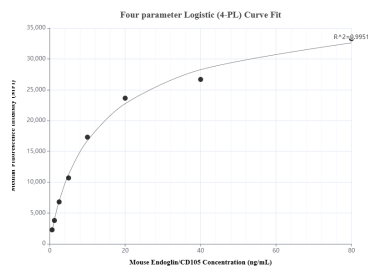
Serum of six mice was measured. The Endoglin/CD105 concentration of detected samples was determined to be 11,141.1 pg/mL with a range of 10,457.3 -12,164.8 pg/mL



Mouse spleen cells (1/2 spleen; 1-2 mm pieces) were cultured in DMEM supplemented with 10% fetal bovine serum, 2.5 mM L-glutamine, 100 U/mL penicillin, and 100 µg/mL streptomycin sulfate. An aliquot of the cell culture supernatant was removed, assayed for mouse Endoglin/CD105, and measured 46.5 pg/mL



The mean Endoglin/CD105 concentration was determined to be 2.2 ng/mL in mouse heart tissue homogenates based on a 1.4 mg/mL extract load and 26.8 ng/mL in mouse spleen tissue homogenates based on a 2.3 mg/mL extract load.



Cytometric bead array standard curve of MP01582-2, MOUSE Endoglin/CD105 Recombinant Matched Antibody Pair, PBS Only. Capture antibody: 84807-2-PBS. Detection antibody: 84807-3-PBS. Standard: Eg1292. Range: 0.625-80 ng/mL