

L3MBTL2 Recombinant Matched Antibody Pair, PBS Only

Catalog Number: **MP01585-1**

Capture Antibody Information

Catalog Number:
84828-2-PBS

Host:
Rabbit

Isotype:
IgG

Purification Method:
Protein A purification

Clone ID:
242288H1

Reactivity:
human

Immunogen Catalog Number:
Ag19570

Conjugate:
Unconjugated

Full name:
l(3)mbt-like 2 (Drosophila)

Gene ID:
83746

Detection Antibody Information

Catalog Number:
84828-1-PBS

Host:
Rabbit

Isotype:
IgG

Purification Method:
Protein A purification

Clone ID:
242288E7

Reactivity:
human

GenBank:
BC017191

Immunogen Catalog Number:
Ag19570

Conjugate:
Unconjugated

Full name:
l(3)mbt-like 2 (Drosophila)

Gene ID:
83746

Applications

Tested Applications:
Cytometric bead array, Sandwich ELISA

Range:
0.781-100 ng/mL (Cytometric Bead Array)
0.781-50 ng/mL (Sandwich ELISA)

Recommended Dilutions:
It is recommended that this reagent should be titrated in each testing system to obtain optimal results.

Product Information

MP01585-1 targets L3MBTL2 in immunoassays as a matched antibody pair. Validated in Cytometric bead array, Sandwich ELISA.

Capture antibody: L3MBTL2 Recombinant antibody, PBS Only (Capture) 84828-2-PBS (242288H1). 100 µg. Concentration 1 mg/mL.

Detection antibody: L3MBTL2 Recombinant antibody, PBS Only (Detector) 84828-1-PBS (242288E7). 100 µg. Concentration 1 mg/mL.

Unconjugated rabbit recombinant monoclonal antibody pair in PBS only storage buffer at a concentration of 1 mg/mL, ready for conjugation. Created using Proteintech's proprietary in-house recombinant technology. Recombinant production enables unrivalled batch-to-batch consistency, easy scale-up, and future security of supply.

Matched antibody pairs are designed for use in a variety of assays and platforms that require matched antibody pairs.

Antibody use should be optimized for each application and assay.

Storage

Storage:
Store at -80°C.
Storage buffer:
PBS only

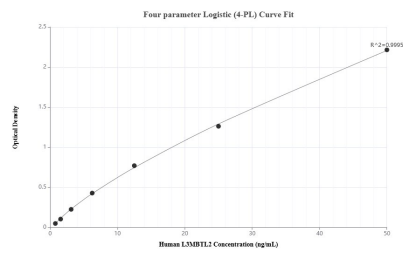
For technical support and original validation data for this product please contact:

T: 1 (888) 4PTGLAB (1-888-478-4522) (toll free in USA), or 1(312) 455-8498 (outside USA)

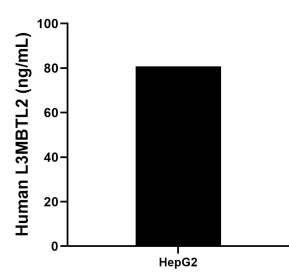
E: proteintech@ptglab.com
W: ptglab.com

This product is exclusively available under Proteintech Group brand and is not available to purchase from any other manufacturer.

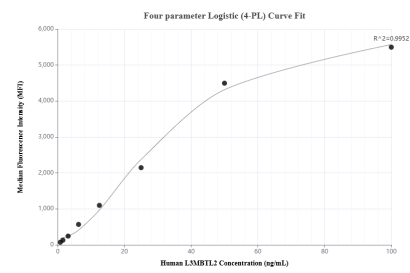
Selected Validation Data



Sandwich ELISA standard curve of MP01585-1, Human L3MBTL2 Recombinant Matched Antibody Pair - PBS only. 84828-2-PBS was coated to a plate as the capture antibody and incubated with serial dilutions of standard Ag19570. 84828-1-PBS was HRP conjugated as the detection antibody. Range: 0.781-50 ng/mL



The mean L3MBTL2 concentration was determined to be 80.77 ng/mL in HepG2 cell extract based on a 1.0 mg/mL extract load.



Cytometric bead array standard curve of MP01585-1, L3MBTL2 Recombinant Matched Antibody Pair, PBS Only. Capture antibody: 84828-2-PBS. Detection antibody: 84828-1-PBS. Standard: Ag19570. Range: 0.781-100 ng/mL