

For Research Use Only

# Mouse APRIL/TNFSF13 Recombinant Matched Antibody Pair, PBS Only



Catalog Number:MP01586-2

## Capture Antibody Information

**Catalog Number:**  
84789-5-PBS  
**Host:**  
Rabbit  
**Isotype:**  
IgG  
**Purification Method:**  
Protein A purification

**Clone ID:**  
241666B7  
**Reactivity:**  
mouse  
**Immunogen Catalog Number:**  
Eg1561

**Conjugate:**  
Unconjugated  
**Full name:**  
tumor necrosis factor (ligand) superfamily, member 13  
**Gene ID:**  
69583

## Detection Antibody Information

**Catalog Number:**  
84789-4-PBS  
**Host:**  
Rabbit  
**Isotype:**  
IgG  
**Purification Method:**  
Protein A purification

**Clone ID:**  
241666F11  
**Reactivity:**  
mouse  
**GenBank:**  
NM\_023517.2  
**Immunogen Catalog Number:**  
Eg1561

**Conjugate:**  
Unconjugated  
**Full name:**  
tumor necrosis factor (ligand) superfamily, member 13  
**Gene ID:**  
69583

## Applications

**Tested Applications:**  
Sandwich ELISA

**Range:**  
0.391-25 ng/mL (Sandwich ELISA)

**Recommended Dilutions:**  
It is recommended that this reagent should be titrated in each testing system to obtain optimal results.

## Product Information

MP01586-2 targets APRIL/TNFSF13 in immunoassays as a matched antibody pair. Validated in Sandwich ELISA.

Capture antibody: Mouse APRIL/TNFSF13 Recombinant monoclonal antibody, PBS Only (Capture) 84789-5-PBS (241666B7). 100 µg. Concentration 1 mg/mL.

Detection antibody: Mouse APRIL/TNFSF13 Recombinant monoclonal antibody, PBS Only (Detector) 84789-4-PBS (241666F11). 100 µg. Concentration 1 mg/mL.

Unconjugated rabbit recombinant monoclonal antibody pair in PBS only storage buffer at a concentration of 1 mg/mL, ready for conjugation. Created using Proteintech's proprietary in-house recombinant technology. Recombinant production enables unrivalled batch-to-batch consistency, easy scale-up, and future security of supply.

Matched antibody pairs are designed for use in a variety of assays and platforms that require matched antibody pairs.

Antibody use should be optimized for each application and assay.

## Storage

**Storage:**  
Store at -80°C.  
**Storage buffer:**  
PBS only

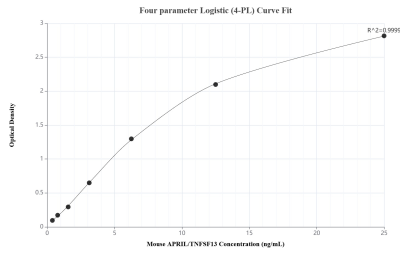
For technical support and original validation data for this product please contact:

T: 1 (888) 4PTGLAB (1-888-478-4522) (toll free in USA), or 1(312) 455-8498 (outside USA)

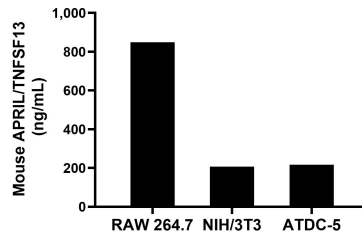
E: [proteintech@ptglab.com](mailto:proteintech@ptglab.com)  
W: [ptglab.com](http://ptglab.com)

This product is exclusively available under Proteintech Group brand and is not available to purchase from any other manufacturer.

## Selected Validation Data



Sandwich ELISA standard curve of MP01586-2, Mouse APRIL/TNFSF13 Recombinant Matched Antibody Pair - PBS only. 84789-5-PBS was coated to a plate as the capture antibody and incubated with serial dilutions of standard Eg1561. 84789-4-PBS was HRP conjugated as the detection antibody. Range: 0.391-25 ng/mL



The mean APRIL/TNFSF13 concentration was determined to be 849.01 ng/mL in RAW 264.7 cell extract based on a 1.20 mg/mL extract load, 206.22 ng/mL in NIH/3T3 cell extract based on a 1.20 mg/mL extract load and 217.28 ng/mL in ATDC-5 cell extract based on a 1.20 mg/mL extract load.