

NDE1 Recombinant Matched Antibody Pair, PBS Only

Catalog Number: **MP01589-1**

Capture Antibody Information

Catalog Number:
84799-2-PBS
Host:
Rabbit
Isotype:
IgG
Purification Method:
Protein A purification

Clone ID:
242340C11
Reactivity:
human
Immunogen Catalog Number:
Ag0336

Conjugate:
Unconjugated
Full name:
nudE nuclear distribution gene E homolog 1 (A. nidulans)
Gene ID:
54820

Detection Antibody Information

Catalog Number:
84799-4-PBS
Host:
Rabbit
Isotype:
IgG
Purification Method:
Protein A purification

Clone ID:
242340H4
Reactivity:
human, mouse, rat
GenBank:
BC001421
Immunogen Catalog Number:
Ag0336

Conjugate:
Unconjugated
Full name:
nudE nuclear distribution gene E homolog 1 (A. nidulans)
Gene ID:
54820

Applications

Tested Applications:
Cytometric bead array, Sandwich ELISA

Range:
0.313-40 ng/mL (Cytometric Bead Array)
0.156-10 ng/mL (Sandwich ELISA)

Recommended Dilutions:
It is recommended that this reagent should be titrated in each testing system to obtain optimal results.

Product Information

MP01589-1 targets NDE1 in immunoassays as a matched antibody pair. Validated in Cytometric bead array, Sandwich ELISA.

Capture antibody: NDE1 Recombinant antibody, PBS Only (Capture) 84799-2-PBS (242340C11). 100 µg. Concentration 1 mg/mL.

Detection antibody: NDE1 Recombinant antibody, PBS Only (Detector) 84799-4-PBS (242340H4). 100 µg. Concentration 1 mg/mL.

Unconjugated rabbit recombinant monoclonal antibody pair in PBS only storage buffer at a concentration of 1 mg/mL, ready for conjugation. Created using Proteintech's proprietary in-house recombinant technology. Recombinant production enables unrivalled batch-to-batch consistency, easy scale-up, and future security of supply.

Matched antibody pairs are designed for use in a variety of assays and platforms that require matched antibody pairs.

Antibody use should be optimized for each application and assay.

Storage

Storage:
Store at -80°C.
Storage buffer:
PBS only

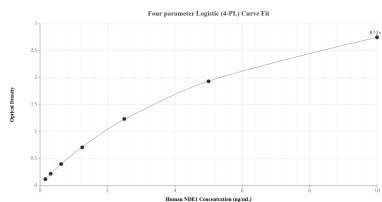
For technical support and original validation data for this product please contact:

T: 1 (888) 4PTGLAB (1-888-478-4522) (toll free in USA), or 1(312) 455-8498 (outside USA)

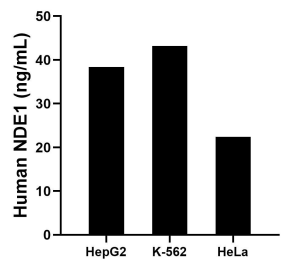
E: proteintech@ptglab.com
W: ptglab.com

This product is exclusively available under Proteintech Group brand and is not available to purchase from any other manufacturer.

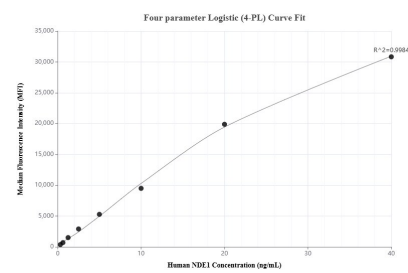
Selected Validation Data



Sandwich ELISA standard curve of MP01589-1, Human NDE1 Recombinant Matched Antibody Pair - PBS only. 84799-2-PBS was coated to a plate as the capture antibody and incubated with serial dilutions of standard Ag0336. 84799-4-PBS was HRP conjugated as the detection antibody. Range: 0.156-10 ng/mL



The mean NDE1 concentration was determined to be 38.38 ng/mL in HepG2 cell extract based on a 2.50 mg/mL extract load, 43.20 ng/mL in K-562 cell extract based on a 1.00 mg/mL extract load and 22.42 ng/mL in HeLa cell extract based on a 1.50 mg/mL extract load.



Cytometric bead array standard curve of MP01589-1, NDE1 Recombinant Matched Antibody Pair, PBS Only. Capture antibody: 84799-2-PBS. Detection antibody: 84799-4-PBS. Standard: Ag0336. Range: 0.313-40 ng/mL