

# LRRFIP1 Recombinant Matched Antibody Pair, PBS Only

Catalog Number: **MP01600-1**

## Capture Antibody Information

**Catalog Number:**  
84778-1-PBS  
**Host:**  
Rabbit  
**Isotype:**  
IgG  
**Purification Method:**  
Protein A purification

**Clone ID:**  
242161C11  
**Reactivity:**  
human  
**Immunogen Catalog Number:**  
Ag34760

**Conjugate:**  
Unconjugated  
**Full name:**  
leucine rich repeat (in FLII) interacting protein 1  
**Gene ID:**  
9208

## Detection Antibody Information

**Catalog Number:**  
84778-2-PBS  
**Host:**  
Rabbit  
**Isotype:**  
IgG  
**Purification Method:**  
Protein A purification

**Clone ID:**  
242161F10  
**Reactivity:**  
human  
**GenBank:**  
BC108914  
**Immunogen Catalog Number:**  
Ag34760

**Conjugate:**  
Unconjugated  
**Full name:**  
leucine rich repeat (in FLII) interacting protein 1  
**Gene ID:**  
9208

## Applications

**Tested Applications:**  
Cytometric bead array, Sandwich ELISA

**Range:**  
0.313-40 ng/mL (Cytometric Bead Array)  
78.1-2500 pg/mL (Sandwich ELISA)

**Recommended Dilutions:**  
It is recommended that this reagent should be titrated in each testing system to obtain optimal results.

## Product Information

MP01600-1 targets LRRFIP1 in immunoassays as a matched antibody pair. Validated in Cytometric bead array, Sandwich ELISA.

Capture antibody: LRRFIP1 Recombinant antibody, PBS Only (Capture) 84778-1-PBS (242161C11). 100 µg. Concentration 1 mg/mL.

Detection antibody: LRRFIP1 Recombinant antibody, PBS Only (Detector) 84778-2-PBS (242161F10). 100 µg. Concentration 1 mg/mL.

Unconjugated rabbit recombinant monoclonal antibody pair in PBS only storage buffer at a concentration of 1 mg/mL, ready for conjugation. Created using Proteintech's proprietary in-house recombinant technology. Recombinant production enables unrivalled batch-to-batch consistency, easy scale-up, and future security of supply.

Matched antibody pairs are designed for use in a variety of assays and platforms that require matched antibody pairs.

Antibody use should be optimized for each application and assay.

## Storage

**Storage:**  
Store at -80°C.  
**Storage buffer:**  
PBS only

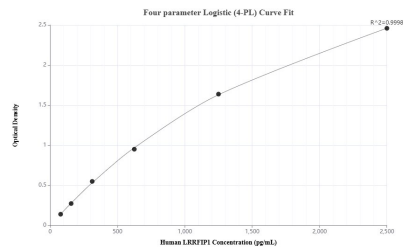
For technical support and original validation data for this product please contact:

T: 1 (888) 4PTGLAB (1-888-478-4522) (toll free in USA), or 1(312) 455-8498 (outside USA)

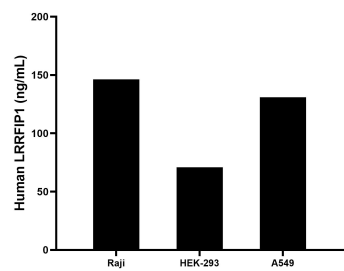
E: [proteintech@ptglab.com](mailto:proteintech@ptglab.com)  
W: [ptglab.com](http://ptglab.com)

**This product is exclusively available under Proteintech Group brand and is not available to purchase from any other manufacturer.**

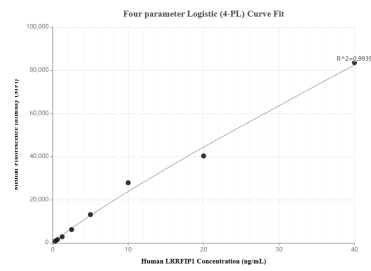
# Selected Validation Data



Sandwich ELISA standard curve of MP01600-1, Human LRRFIP1 Recombinant Matched Antibody Pair - PBS only. 84778-1-PBS was coated to a plate as the capture antibody and incubated with serial dilutions of standard Ag34760. 84778-2-PBS was HRP conjugated as the detection antibody. Range: 78.1-2500 pg/mL



The mean LRRFIP1 concentration was determined to be 146.23 ng/mL in Raji cell extract based on a 1.4 mg/mL extract load, 70.95 ng/mL in HEK-293 cell extract based on a 1.2 mg/mL extract load and 131.01 ng/mL in A549 cell extract based on a 2.5 mg/mL extract load.



Cytometric bead array standard curve of MP01600-1, LRRFIP1 Recombinant Matched Antibody Pair, PBS Only. Capture antibody: 84778-1-PBS. Detection antibody: 84778-2-PBS. Standard: Ag34760. Range: 0.313-40 ng/mL