

Mouse P62/SQSTM1 Recombinant Matched Antibody Pair, PBS Only

Catalog Number: **MP01608-2**

Capture Antibody Information

Catalog Number:
84826-1-PBS

Host:
Rabbit

Isotype:
IgG

Purification Method:
Protein A purification

Clone ID:
241992C4

Reactivity:
human, mouse, rat

Immunogen Catalog Number:
Ag35064

Conjugate:
Unconjugated

Full name:
sequestosome 1

Gene ID:
18412

Detection Antibody Information

Catalog Number:
84826-2-PBS

Host:
Rabbit

Isotype:
IgG

Purification Method:
Protein A purification

Clone ID:
241992G4

Reactivity:
mouse

GenBank:
NM_011018

Immunogen Catalog Number:
Ag35064

Conjugate:
Unconjugated

Full name:
sequestosome 1

Gene ID:
18412

Applications

Tested Applications:
Sandwich ELISA

Range:
0.781-50 ng/mL (Sandwich ELISA)

Recommended Dilutions:
It is recommended that this reagent should be titrated in each testing system to obtain optimal results.

Product Information

MP01608-2 targets P62/SQSTM1 in immunoassays as a matched antibody pair. Validated in Sandwich ELISA.

Capture antibody: Mouse P62/SQSTM1 Recombinant antibody, PBS Only (Capture/Detector) 84826-1-PBS (241992C4). 100 µg. Concentration 1 mg/mL.

Detection antibody: Mouse P62/SQSTM1 Recombinant antibody, PBS Only (Capture/Detector) 84826-2-PBS (241992G4). 100 µg. Concentration 1 mg/mL.

Unconjugated rabbit recombinant monoclonal antibody pair in PBS only storage buffer at a concentration of 1 mg/mL, ready for conjugation. Created using Proteintech's proprietary in-house recombinant technology. Recombinant production enables unrivalled batch-to-batch consistency, easy scale-up, and future security of supply.

Matched antibody pairs are designed for use in a variety of assays and platforms that require matched antibody pairs.

Antibody use should be optimized for each application and assay.

Storage

Storage:
Store at -80°C.
Storage buffer:
PBS only

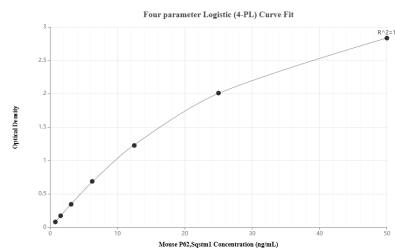
For technical support and original validation data for this product please contact:

T: 1 (888) 4PTGLAB (1-888-478-4522) (toll free in USA), or 1(312) 455-8498 (outside USA)

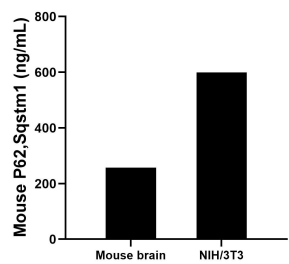
E: proteintech@ptglab.com
W: ptglab.com

This product is exclusively available under Proteintech Group brand and is not available to purchase from any other manufacturer.

Selected Validation Data



Sandwich ELISA standard curve of MP01608-2, Mouse P62,Sqstm1 Recombinant Matched Antibody Pair - PBS only. 84826-1-PBS was coated to a plate as the capture antibody and incubated with serial dilutions of standard Ag35064. 84826-2-PBS was HRP conjugated as the detection antibody. Range: 0.781-50 ng/mL



The mean P62,Sqstm1 concentration was determined to be 257.13 ng/mL in mouse brain tissue extract based on a 1.6 mg/mL extract load and 598.93 ng/mL in NIH/3T3 cell extract based on a 1.5 mg/mL extract load.