

For Research Use Only



# AMACR/p504S Recombinant Matched Antibody Pair, PBS Only

Catalog Number:MP01623-4

## Capture Antibody Information

Catalog Number:  
84891-7-PBS

Host:  
Rabbit

Isotype:  
IgG

Purification Method:  
Protein A purification

Clone ID:  
250503E11

Reactivity:  
human

Immunogen Catalog Number:  
Eg4005

Conjugate:  
Unconjugated

Full name:  
alpha-methylacyl-CoA racemase

Gene ID:  
23600

## Detection Antibody Information

Catalog Number:  
84891-6-PBS

Host:  
Rabbit

Isotype:  
IgG

Purification Method:  
Protein A purification

Clone ID:  
250503E1

Reactivity:  
human

GenBank:  
NM\_014324.6

Immunogen Catalog Number:  
Eg4005

Conjugate:  
Unconjugated

Full name:  
alpha-methylacyl-CoA racemase

Gene ID:  
23600

## Applications

Tested Applications:  
Sandwich ELISA

Range:  
62.5-4000 pg/mL (Sandwich ELISA)

Recommended Dilutions:  
It is recommended that this reagent should be titrated in each testing system to obtain optimal results.

## Product Information

MP01623-4 targets AMACR/p504S in immunoassays as a matched antibody pair. Validated in Sandwich ELISA.

Capture antibody: AMACR Recombinant antibody, PBS Only (Capture) 84891-7-PBS (250503E11). 100 µg. Concentration 1 mg/mL.

Detection antibody: AMACR Recombinant antibody, PBS Only (Detector) 84891-6-PBS (250503E1). 100 µg. Concentration 1 mg/mL.

Unconjugated rabbit recombinant monoclonal antibody pair in PBS only storage buffer at a concentration of 1 mg/mL, ready for conjugation. Created using Proteintech's proprietary in-house recombinant technology. Recombinant production enables unrivalled batch-to-batch consistency, easy scale-up, and future security of supply.

Matched antibody pairs are designed for use in a variety of assays and platforms that require matched antibody pairs.

Antibody use should be optimized for each application and assay.

## Storage

Storage:  
Store at -80°C.  
Storage buffer:  
PBS only

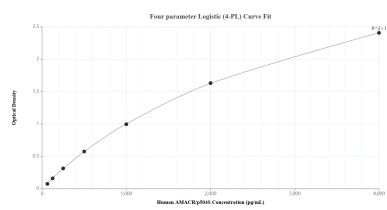
For technical support and original validation data for this product please contact:

T: 1 (888) 4PTGLAB (1-888-478-4522) (toll free in USA), or 1(312) 455-8498 (outside USA)

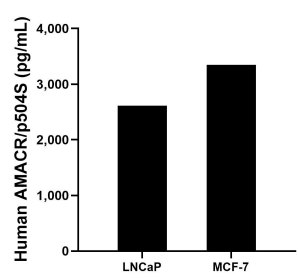
E: [proteintech@ptglab.com](mailto:proteintech@ptglab.com)  
W: [ptglab.com](http://ptglab.com)

This product is exclusively available under Proteintech Group brand and is not available to purchase from any other manufacturer.

## Selected Validation Data



Sandwich ELISA standard curve of MP01623-4, Human AMACR/p504S Recombinant Matched Antibody Pair - PBS only. 84891-7-PBS was coated to a plate as the capture antibody and incubated with serial dilutions of standard Eg4005. 84891-6-PBS was HRP conjugated as the detection antibody. Range: 62.5-4000 pg/mL



The mean AMACR/p504S concentration was determined to be 2,611.4 pg/mL in LNCaP cell extract based on a 2.6 mg/mL extract load and 3,344.8 pg/mL in MCF-7 cell extract based on a 1.3 mg/mL extract load.