

Mouse TCB1 Recombinant Matched Antibody Pair, PBS Only

Catalog Number: **MP01642-1**

Capture Antibody Information

Catalog Number:

84878-2-PBS

Host:

Rabbit

Isotype:

IgG

Purification Method:

Protein A purification

Clone ID:

241802D4

Reactivity:

mouse

Immunogen Catalog Number:

Eg2437

Conjugate:

Unconjugated

Full name:

TCB1

Gene ID:

Detection Antibody Information

Catalog Number:

84878-1-PBS

Host:

Rabbit

Isotype:

IgG

Purification Method:

Protein A purification

Clone ID:

241802A8

Reactivity:

mouse

GenBank:

Eg2437

Immunogen Catalog Number:

Eg2437

Conjugate:

Unconjugated

Full name:

TCB1

Gene ID:

Applications

Tested Applications:

Cytometric bead array, Sandwich ELISA

Range:

0.625-40 ng/mL (Cytometric Bead Array)
19.5-1250 pg/mL (Sandwich ELISA)

Recommended Dilutions:

It is recommended that this reagent should be titrated in each testing system to obtain optimal results.

Product Information

MP01642-1 targets TCB1 in immunoassays as a matched antibody pair. Validated in Cytometric bead array, Sandwich ELISA.

Capture antibody: Mouse TCB1 Recombinant antibody, PBS Only (Capture) 84878-2-PBS (241802D4). 100 µg. Concentration 1 mg/mL.

Detection antibody: Mouse TCB1 Recombinant antibody, PBS Only (Detector) 84878-1-PBS (241802A8). 100 µg. Concentration 1 mg/mL.

Unconjugated rabbit recombinant monoclonal antibody pair in PBS only storage buffer at a concentration of 1 mg/mL, ready for conjugation. Created using Proteintech's proprietary in-house recombinant technology. Recombinant production enables unrivalled batch-to-batch consistency, easy scale-up, and future security of supply.

Matched antibody pairs are designed for use in a variety of assays and platforms that require matched antibody pairs.

Antibody use should be optimized for each application and assay.

Storage

Storage:

Store at -80°C.

Storage buffer:

PBS only

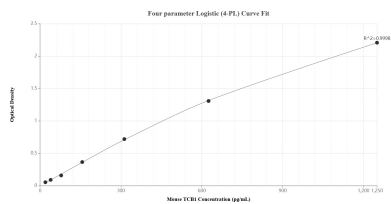
For technical support and original validation data for this product please contact:

T: 1 (888) 4PTGLAB (1-888-478-4522) (toll free in USA), or 1(312) 455-8498 (outside USA)

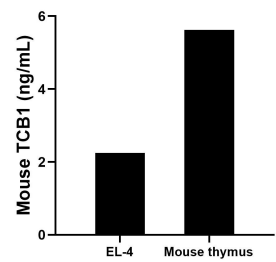
E: proteintech@ptglab.com
W: ptglab.com

This product is exclusively available under Proteintech Group brand and is not available to purchase from any other manufacturer.

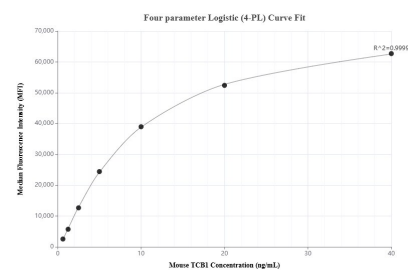
Selected Validation Data



Sandwich ELISA standard curve of MP01642-1, Mouse TCB1 Recombinant Matched Antibody Pair - PBS only. 84878-2-PBS was coated to a plate as the capture antibody and incubated with serial dilutions of standard Eg2437. 84878-1-PBS was HRP conjugated as the detection antibody. Range: 19.5-1250 pg/mL.



The mean TCB1 concentration was determined to be 2.3 ng/mL in EL-4 cell extract based on a 3.7 mg/mL extract load and 5.6 ng/mL in mouse thymus tissue extract based on a 1.3 mg/mL extract load.



Cytometric bead array standard curve of MP01642-1, MOUSE TCB1 Recombinant Matched Antibody Pair, PBS Only. Capture antibody: 84878-2-PBS. Detection antibody: 84878-1-PBS. Standard: Eg2437. Range: 0.625-40 ng/mL.