

# PLSCR1 Recombinant Matched Antibody Pair, PBS Only

Catalog Number: **MP01664-3**

## Capture Antibody Information

Catalog Number:  
84888-1-PBS

Host:  
Rabbit

Isotype:  
IgG

Purification Method:  
Protein A purification

Clone ID:  
242372B1

Reactivity:  
human

Immunogen Catalog Number:  
Ag2172

Conjugate:  
Unconjugated

Full name:  
phospholipid scramblase 1

Gene ID:  
5359

## Detection Antibody Information

Catalog Number:  
84888-5-PBS

Host:  
Rabbit

Isotype:  
IgG

Purification Method:  
Protein A purification

Clone ID:  
242372C6

Reactivity:  
human

GenBank:  
BC021100

Immunogen Catalog Number:  
Ag2172

Conjugate:  
Unconjugated

Full name:  
phospholipid scramblase 1

Gene ID:  
5359

## Applications

Tested Applications:  
Sandwich ELISA

Range:  
156.3-5000 pg/mL (Sandwich ELISA)

Recommended Dilutions:  
It is recommended that this reagent should be titrated in each testing system to obtain optimal results.

## Product Information

MP01664-3 targets PLSCR1 in immunoassays as a matched antibody pair. Validated in Sandwich ELISA.

Capture antibody: PLSCR1 Recombinant antibody, PBS Only (Capture) 84888-1-PBS (242372B1). 100 µg. Concentration 1 mg/mL.

Detection antibody: PLSCR1 Recombinant antibody, PBS Only (Detector) 84888-5-PBS (242372C6). 100 µg. Concentration 1 mg/mL.

Unconjugated rabbit recombinant monoclonal antibody pair in PBS only storage buffer at a concentration of 1 mg/mL, ready for conjugation. Created using Proteintech's proprietary in-house recombinant technology. Recombinant production enables unrivalled batch-to-batch consistency, easy scale-up, and future security of supply.

Matched antibody pairs are designed for use in a variety of assays and platforms that require matched antibody pairs.

Antibody use should be optimized for each application and assay.

## Storage

Storage:  
Store at -80°C.  
Storage buffer:  
PBS only

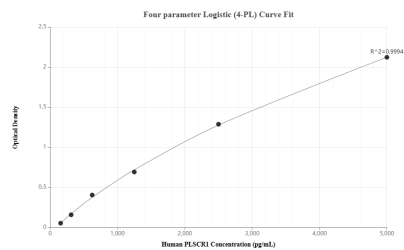
For technical support and original validation data for this product please contact:

T: 1 (888) 4PTGLAB (1-888-478-4522) (toll free in USA), or 1(312) 455-8498 (outside USA)

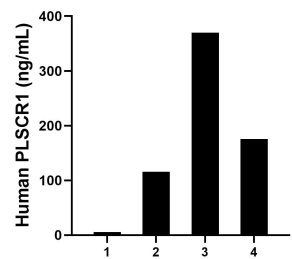
E: [proteintech@ptglab.com](mailto:proteintech@ptglab.com)  
W: [ptglab.com](http://ptglab.com)

**This product is exclusively available under Proteintech Group brand and is not available to purchase from any other manufacturer.**

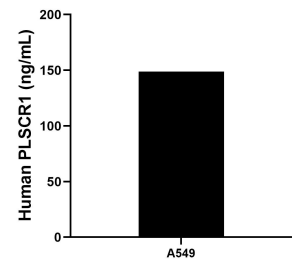
## Selected Validation Data



Sandwich ELISA standard curve of MP01664-3, Human PLSCR1 Recombinant Matched Antibody Pair - PBS only. 84888-1-PBS was coated to a plate as the capture antibody and incubated with serial dilutions of standard Ag2172. 84888-5-PBS was HRP conjugated as the detection antibody. Range: 156.3-5000 pg/mL



Urine of four individual healthy human donors was measured. The human PLSCR1 concentration of detected samples was determined to be 166.67 ng/mL with a range of 5.59 - 369.55 ng/mL



The mean PLSCR1 concentration was determined to be 148.88 ng/mL in A549 cell extract based on a 2.0 mg/mL extract load.