

# APOH Recombinant Matched Antibody Pair, PBS Only

Catalog Number: **MP01667-1**

## Capture Antibody Information

**Catalog Number:**  
84943-1-PBS  
**Host:**  
Rabbit  
**Isotype:**  
IgG  
**Purification Method:**  
Protein A purification

**Clone ID:**  
242454B2  
**Reactivity:**  
human

**Conjugate:**  
Unconjugated  
**Full name:**  
apolipoprotein H (beta-2-glycoprotein I)  
**Gene ID:**  
350

## Detection Antibody Information

**Catalog Number:**  
84943-2-PBS  
**Host:**  
Rabbit  
**Isotype:**  
IgG  
**Purification Method:**  
Protein A purification

**Clone ID:**  
242454E4  
**Reactivity:**  
human  
**GenBank:**  
NM\_000042.2

**Conjugate:**  
Unconjugated  
**Full name:**  
apolipoprotein H (beta-2-glycoprotein I)  
**Gene ID:**  
350

## Applications

**Tested Applications:**  
Cytometric bead array, Sandwich ELISA

**Range:**  
0.625-80 ng/mL (Cytometric Bead Array)  
39.1-2500 pg/mL (Sandwich ELISA)

**Recommended Dilutions:**  
It is recommended that this reagent should be titrated in each testing system to obtain optimal results.

## Product Information

MP01667-1 targets APOH in immunoassays as a matched antibody pair. Validated in Cytometric bead array, Sandwich ELISA.

Capture antibody: APOH Recombinant antibody, PBS Only (Capture) 84943-1-PBS (242454B2). 100 µg. Concentration 1 mg/mL.

Detection antibody: APOH Recombinant antibody, PBS Only (Detector) 84943-2-PBS (242454E4). 100 µg. Concentration 1 mg/mL.

Unconjugated rabbit recombinant monoclonal antibody pair in PBS only storage buffer at a concentration of 1 mg/mL, ready for conjugation. Created using Proteintech's proprietary in-house recombinant technology. Recombinant production enables unrivalled batch-to-batch consistency, easy scale-up, and future security of supply.

Matched antibody pairs are designed for use in a variety of assays and platforms that require matched antibody pairs.

Antibody use should be optimized for each application and assay.

## Storage

**Storage:**  
Store at -80°C.  
**Storage buffer:**  
PBS only

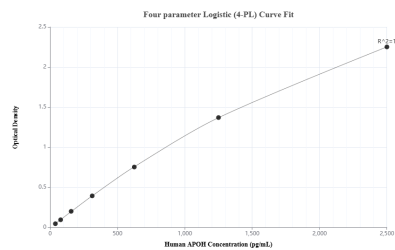
For technical support and original validation data for this product please contact:

T: 1 (888) 4PTGLAB (1-888-478-4522) (toll free in USA), or 1(312) 455-8498 (outside USA)

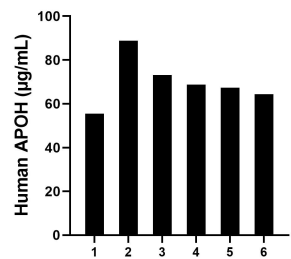
E: [proteintech@ptglab.com](mailto:proteintech@ptglab.com)  
W: [ptglab.com](http://ptglab.com)

**This product is exclusively available under Proteintech Group brand and is not available to purchase from any other manufacturer.**

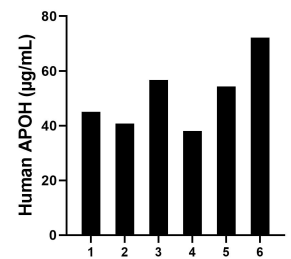
## Selected Validation Data



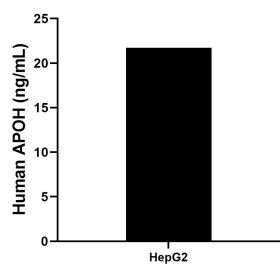
Sandwich ELISA standard curve of MP01667-1, Human APOH Recombinant Matched Antibody Pair - PBS only. 84943-1-PBS was coated to a plate as the capture antibody and incubated with serial dilutions of standard Eg3084. 84943-2-PBS was HRP conjugated as the detection antibody. Range: 39.1-2500 µg/mL



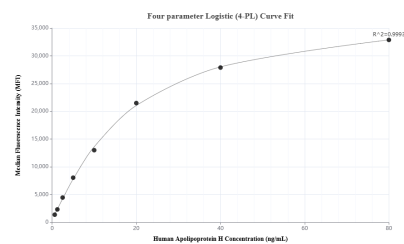
Serum of six individual healthy human donors was measured. The human APOH concentration of detected samples was determined to be 69.62 µg/mL with a range of 55.50 - 88.74 µg/mL



Plasma of six individual healthy human donors was measured. The human APOH concentration of detected samples was determined to be 51.16 µg/mL with a range of 38.03 - 72.18 µg/mL



The mean APOH concentration was determined to be 21.74 ng/mL in HepG2 cell extract based on a 1.0 mg/mL extract load.



Cytometric bead array standard curve of MP01667-1, APOH Recombinant Matched Antibody Pair, PBS Only. Capture antibody: 84943-1-PBS. Detection antibody: 84943-2-PBS. Standard: Eg3084. Range: 0.625-80 ng/mL