

# RAD21 Recombinant Matched Antibody Pair, PBS Only

Catalog Number: **MP01677-2**

## Capture Antibody Information

**Catalog Number:**

84920-3-PBS

**Host:**

Rabbit

**Isotype:**

IgG

**Purification Method:**

Protein A purification

**Clone ID:**

242172F1

**Reactivity:**

human

**Immunogen Catalog Number:**

Ag25481

**Conjugate:**

Unconjugated

**Full name:**

RAD21 homolog (S. pombe)

**Gene ID:**

5885

## Detection Antibody Information

**Catalog Number:**

84920-1-PBS

**Host:**

Rabbit

**Isotype:**

IgG

**Purification Method:**

Protein A purification

**Clone ID:**

242172A1

**Reactivity:**

human

**GenBank:**

BC050381

**Immunogen Catalog Number:**

Ag25481

**Conjugate:**

Unconjugated

**Full name:**

RAD21 homolog (S. pombe)

**Gene ID:**

5885

## Applications

**Tested Applications:**

Cytometric bead array, Sandwich ELISA

**Range:**

0.313-40 ng/mL (Cytometric Bead Array)  
78.1-5000 pg/mL (Sandwich ELISA)

**Recommended Dilutions:**

It is recommended that this reagent should be titrated in each testing system to obtain optimal results.

## Product Information

MP01677-2 targets RAD21 in immunoassays as a matched antibody pair. Validated in Cytometric bead array, Sandwich ELISA.

Capture antibody: RAD21 Recombinant antibody, PBS Only (Capture) 84920-3-PBS (242172F1). 100 µg. Concentration 1 mg/mL.

Detection antibody: RAD21 Recombinant antibody, PBS Only (Detector) 84920-1-PBS (242172A1). 100 µg. Concentration 1 mg/mL.

Unconjugated rabbit recombinant monoclonal antibody pair in PBS only storage buffer at a concentration of 1 mg/mL, ready for conjugation. Created using Proteintech's proprietary in-house recombinant technology. Recombinant production enables unrivalled batch-to-batch consistency, easy scale-up, and future security of supply.

Matched antibody pairs are designed for use in a variety of assays and platforms that require matched antibody pairs.

Antibody use should be optimized for each application and assay.

## Storage

**Storage:**

Store at -80°C.

**Storage buffer:**

PBS only

For technical support and original validation data for this product please contact:

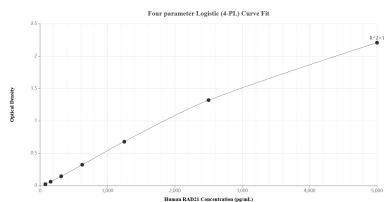
T: 1 (888) 4PTGLAB (1-888-478-4522) (toll free in USA), or 1(312) 455-8498 (outside USA)

E: [proteintech@ptglab.com](mailto:proteintech@ptglab.com)

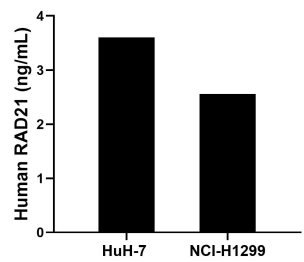
W: [ptglab.com](http://ptglab.com)

**This product is exclusively available under Proteintech Group brand and is not available to purchase from any other manufacturer.**

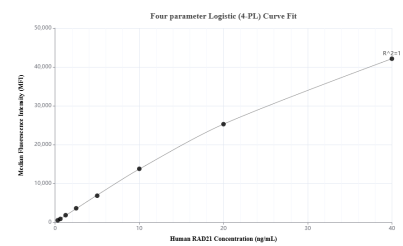
## Selected Validation Data



Sandwich ELISA standard curve of MP01677-2, Human RAD21 Recombinant Matched Antibody Pair - PBS only. 84920-3-PBS was coated to a plate as the capture antibody and incubated with serial dilutions of standard Ag25481. 84920-1-PBS was HRP conjugated as the detection antibody. Range: 78.1-5000 pg/mL



The mean RAD21 concentration was determined to be 3.6 ng/mL in HuH-7 cell extract based on a 1.4 mg/mL extract load and 2.6 ng/mL in NCI-H1299 cell extract based on a 1.2 mg/mL extract load.



Cytometric bead array standard curve of MP01677-2, RAD21 Recombinant Matched Antibody Pair, PBS Only. Capture antibody: 84920-3-PBS. Detection antibody: 84920-1-PBS. Standard: Ag25481. Range: 0.313-40 ng/mL