

JUNB Recombinant Matched Antibody Pair, PBS Only

Catalog Number: **MP01695-3**

Capture Antibody Information

Catalog Number: 84922-3-PBS	Clone ID: 242562F9	Conjugate: Unconjugated
Host: Rabbit	Reactivity: human	Full name: jun B proto-oncogene
Isotype: IgG	Immunogen Catalog Number: Ag0752	Gene ID: 3726
Purification Method: Protein A purification		

Detection Antibody Information

Catalog Number: 84922-4-PBS	Clone ID: 242562E9	Conjugate: Unconjugated
Host: Rabbit	Reactivity: human	Full name: jun B proto-oncogene
Isotype: IgG	GenBank: BC004250	Gene ID: 3726
Purification Method: Protein A purification	Immunogen Catalog Number: Ag0752	

Applications

Tested Applications: Sandwich ELISA	Range: 39.1-2500 pg/mL (Sandwich ELISA)	Recommended Dilutions: It is recommended that this reagent should be titrated in each testing system to obtain optimal results.
----------------------------------------	--------------------------------------------	------------------------------------------------------------------------------------------------------------------------------------

Product Information

MP01695-3 targets JUNB in immunoassays as a matched antibody pair. Validated in Sandwich ELISA.

Capture antibody: JUNB Recombinant antibody, PBS Only (Capture) 84922-3-PBS (242562F9). 100 µg. Concentration 1 mg/mL.

Detection antibody: JUNB Recombinant antibody, PBS Only (Detector) 84922-4-PBS (242562E9). 100 µg. Concentration 1 mg/mL.

Unconjugated rabbit recombinant monoclonal antibody pair in PBS only storage buffer at a concentration of 1 mg/mL, ready for conjugation. Created using Proteintech's proprietary in-house recombinant technology. Recombinant production enables unrivalled batch-to-batch consistency, easy scale-up, and future security of supply.

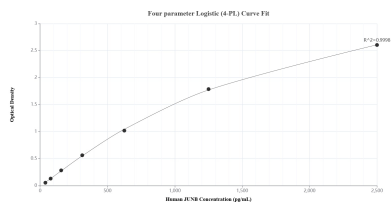
Matched antibody pairs are designed for use in a variety of assays and platforms that require matched antibody pairs.

Antibody use should be optimized for each application and assay.

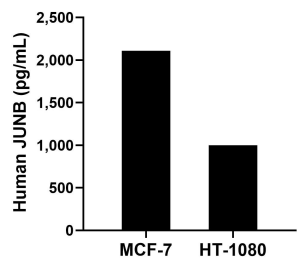
Storage

Storage:
Store at -80°C.
Storage buffer:
PBS only

Selected Validation Data



Sandwich ELISA standard curve of MP01695-3, Human JUNB Recombinant Matched Antibody Pair - PBS only. 84922-3-PBS was coated to a plate as the capture antibody and incubated with serial dilutions of standard Ag0752. 84922-4-PBS was HRP conjugated as the detection antibody. Range: 39.1-2500 pg/mL.



The mean JUNB concentration was determined to be 2,110.1 pg/mL in MCF-7 cell extract based on a 1.2 mg/mL extract load and 998.0 ng/mL in HT-1080 cell extract based on a 1.4 mg/mL extract load.