

TYRO3 Recombinant Matched Antibody Pair, PBS Only

Catalog Number: **MP01701-3**

Capture Antibody Information

Catalog Number:

84929-4-PBS

Host:

Rabbit

Isotype:

IgG

Purification Method:

Protein A purification

Clone ID:

242477E1

Reactivity:

human

Immunogen Catalog Number:

Ag29527

Conjugate:

Unconjugated

Full name:

TYRO3 protein tyrosine kinase

Gene ID:

7301

Detection Antibody Information

Catalog Number:

84929-5-PBS

Host:

Rabbit

Isotype:

IgG

Purification Method:

Protein A purification

Clone ID:

242477E12

Reactivity:

human

GenBank:

BC049368

Immunogen Catalog Number:

Ag29527

Conjugate:

Unconjugated

Full name:

TYRO3 protein tyrosine kinase

Gene ID:

7301

Applications

Tested Applications:

Sandwich ELISA

Range:

0.781-50 ng/mL (Sandwich ELISA)

Recommended Dilutions:

It is recommended that this reagent should be titrated in each testing system to obtain optimal results.

Product Information

MP01701-3 targets TYRO3 in immunoassays as a matched antibody pair. Validated in Sandwich ELISA.

Capture antibody: TYRO3 Recombinant antibody, PBS Only (Capture) 84929-4-PBS (242477E1). 100 µg. Concentration 1 mg/mL.

Detection antibody: TYRO3 Recombinant antibody, PBS Only (Detector) 84929-5-PBS (242477E12). 100 µg. Concentration 1 mg/mL.

Unconjugated rabbit recombinant monoclonal antibody pair in PBS only storage buffer at a concentration of 1 mg/mL, ready for conjugation. Created using Proteintech's proprietary in-house recombinant technology. Recombinant production enables unrivalled batch-to-batch consistency, easy scale-up, and future security of supply.

Matched antibody pairs are designed for use in a variety of assays and platforms that require matched antibody pairs.

Antibody use should be optimized for each application and assay.

Storage

Storage:

Store at -80°C.

Storage buffer:

PBS only

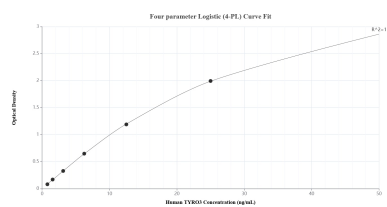
For technical support and original validation data for this product please contact:

T: 1 (888) 4PTGLAB (1-888-478-4522) (toll free in USA), or 1(312) 455-8498 (outside USA)

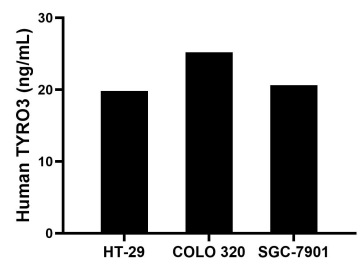
E: proteintech@ptglab.com
W: ptglab.com

This product is exclusively available under Proteintech Group brand and is not available to purchase from any other manufacturer.

Selected Validation Data



Sandwich ELISA standard curve of MP01701-3, Human TYRO3 Recombinant Matched Antibody Pair - PBS only. 84929-4-PBS was coated to a plate as the capture antibody and incubated with serial dilutions of standard Ag29527. 84929-5-PBS was HRP conjugated as the detection antibody. Range: 0.781-50 ng/mL.



The mean TYRO3 concentration was determined to be 19.82 ng/mL in HT-29 cell extract based on a 1.50 mg/mL extract load, 25.19 ng/mL in COLO 320 cell extract based on a 1.40 mg/mL extract load and 20.61 ng/mL in SGC-7901 cell extract based on a 1.60 mg/mL extract load.