

CA2 Recombinant Matched Antibody Pair, PBS Only

Catalog Number: **MP01702-2**

Capture Antibody Information

Catalog Number:
84954-1-PBSHost:
RabbitIsotype:
IgGPurification Method:
Protein A purificationClone ID:
242559A2Reactivity:
humanImmunogen Catalog Number:
Ag10680Conjugate:
UnconjugatedFull name:
carbonic anhydrase IIGene ID:
760

Detection Antibody Information

Catalog Number:
84954-2-PBSHost:
RabbitIsotype:
IgGPurification Method:
Protein A purificationClone ID:
242559E1Reactivity:
humanGenBank:
BC011949Immunogen Catalog Number:
Ag10680Conjugate:
UnconjugatedFull name:
carbonic anhydrase IIGene ID:
760

Applications

Tested Applications:

Cytometric bead array, Sandwich
ELISA

Range:

0.156-20 ng/mL (Cytometric Bead
Array)
1.56-100 ng/mL (Sandwich ELISA)

Recommended Dilutions:

It is recommended that this reagent
should be titrated in each testing
system to obtain optimal results.

Product Information

MP01702-2 targets CA2 in immunoassays as a matched antibody pair. Validated in Cytometric bead array, Sandwich ELISA.

Capture antibody: CA2 Recombinant antibody, PBS Only (Capture/Detector) 84954-1-PBS (242559A2). 100 µg. Concentration 1 mg/mL.

Detection antibody: CA2 Recombinant antibody, PBS Only (Detector) 84954-2-PBS (242559E1). 100 µg. Concentration 1 mg/mL.

Unconjugated rabbit recombinant monoclonal antibody pair in PBS only storage buffer at a concentration of 1 mg/mL, ready for conjugation. Created using Proteintech's proprietary in-house recombinant technology. Recombinant production enables unrivalled batch-to-batch consistency, easy scale-up, and future security of supply.

Matched antibody pairs are designed for use in a variety of assays and platforms that require matched antibody pairs.

Antibody use should be optimized for each application and assay.

Storage

Storage:

Store at -80°C.

Storage buffer:

PBS only

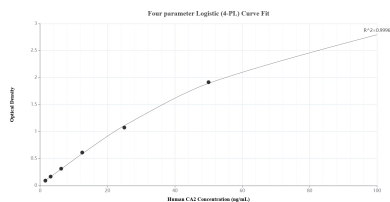
For technical support and original validation data for this product please contact:

T: 1 (888) 4PTGLAB (1-888-478-4522) (toll free
in USA), or 1(312) 455-8498 (outside USA)

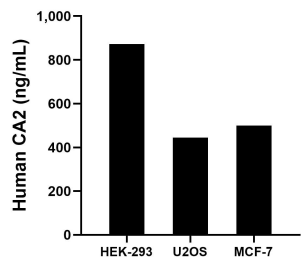
E: proteintech@ptglab.com
W: ptglab.com

This product is exclusively available under Proteintech Group brand and is not available to purchase from any other manufacturer.

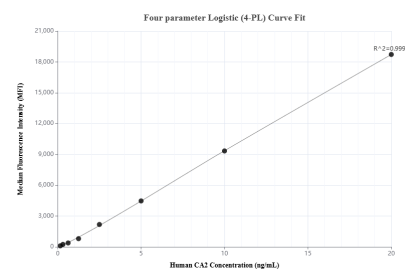
Selected Validation Data



Sandwich ELISA standard curve of MP01702-2, Human CA2 Recombinant Matched Antibody Pair - PBS only. 84954-1-PBS was coated to a plate as the capture antibody and incubated with serial dilutions of standard Ag10680. 84954-2-PBS was HRP conjugated as the detection antibody. Range: 1.56-100 ng/mL.



The mean CA2 concentration was determined to be 872.48 ng/mL in HEK-293 cell extract based on a 2.70 mg/mL extract load, 444.36 ng/mL in U2OS cell extract based on a 3.10 mg/mL extract load and 499.13 ng/mL in MCF-7 cell extract based on a 1.20 mg/mL extract load.



Cytometric bead array standard curve of MP01702-2, CA2 Recombinant Matched Antibody Pair, PBS Only. Capture antibody: 84954-1-PBS. Detection antibody: 84954-2-PBS. Standard: Ag10680. Range: 0.156-20 ng/mL.