

TLR6 Recombinant Matched Antibody Pair, PBS Only

Catalog Number: **MP01727-1**

Capture Antibody Information

Catalog Number:
84811-3-PBS
Host:
Rabbit
Isotype:
IgG
Purification Method:
Protein A purification

Clone ID:
241926C4
Reactivity:
human

Conjugate:
Unconjugated
Full name:
toll-like receptor 6
Gene ID:
10333

Detection Antibody Information

Catalog Number:
84811-2-PBS
Host:
Rabbit
Isotype:
IgG
Purification Method:
Protein A purification

Clone ID:
241926F2
Reactivity:
human, mouse
GenBank:
BC111755

Conjugate:
Unconjugated
Full name:
toll-like receptor 6
Gene ID:
10333

Applications

Tested Applications:
Sandwich ELISA

Range:
6.25-400 pg/mL (Sandwich ELISA)

Recommended Dilutions:
It is recommended that this reagent should be titrated in each testing system to obtain optimal results.

Product Information

MP01727-1 targets TLR6 in immunoassays as a matched antibody pair. Validated in Sandwich ELISA.

Capture antibody: TLR6 Recombinant antibody, PBS Only (Capture) 84811-3-PBS (241926C4). 100 µg. Concentration 1 mg/mL.

Detection antibody: TLR6 Recombinant antibody, PBS Only (Detector) 84811-2-PBS (241926F2). 100 µg. Concentration 1 mg/mL.

Unconjugated rabbit recombinant monoclonal antibody pair in PBS only storage buffer at a concentration of 1 mg/mL, ready for conjugation. Created using Proteintech's proprietary in-house recombinant technology. Recombinant production enables unrivalled batch-to-batch consistency, easy scale-up, and future security of supply.

Matched antibody pairs are designed for use in a variety of assays and platforms that require matched antibody pairs.

Antibody use should be optimized for each application and assay.

Storage

Storage:
Store at -80°C.
Storage buffer:
PBS only

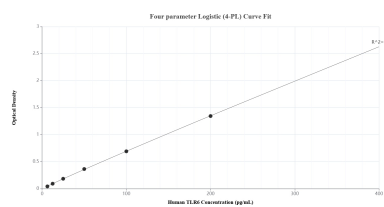
For technical support and original validation data for this product please contact:

T: 1 (888) 4PTGLAB (1-888-478-4522) (toll free in USA), or 1(312) 455-8498 (outside USA)

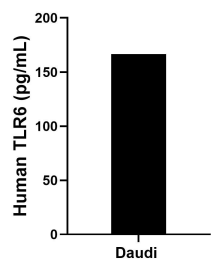
E: proteintech@ptglab.com
W: ptglab.com

This product is exclusively available under Proteintech Group brand and is not available to purchase from any other manufacturer.

Selected Validation Data



Sandwich ELISA standard curve of MP01727-1, Human TLR6 Recombinant Matched Antibody Pair - PBS only. 84811-3-PBS was coated to a plate as the capture antibody and incubated with serial dilutions of standard SY02306. 84811-2-PBS was HRP conjugated as the detection antibody. Range: 6.25-400 pg/mL.



The mean TLR6 concentration was determined to be 166.5 pg/mL in Daudi cell extract based on a 1.8 mg/mL extract load.