

For Research Use Only

Mouse HGF Recombinant Matched Antibody Pair, PBS Only



Catalog Number:MP01760-3

Capture Antibody Information

Catalog Number:
85014-4-PBS

Host:
Rabbit

Isotype:
IgG

Purification Method:
Protein A purification

Clone ID:
242476C1

Reactivity:
mouse

Immunogen Catalog Number:
Eg0675

Conjugate:
Unconjugated

Full name:
hepatocyte growth factor

Gene ID:
15234

Detection Antibody Information

Catalog Number:
85014-3-PBS

Host:
Rabbit

Isotype:
IgG

Purification Method:
Protein A purification

Clone ID:
242476H8

Reactivity:
mouse

GenBank:
NM_001289458.1

Immunogen Catalog Number:
Eg0675

Conjugate:
Unconjugated

Full name:
hepatocyte growth factor

Gene ID:
15234

Applications

Tested Applications:
Sandwich ELISA

Range:
62.5-4000 pg/mL (Sandwich ELISA)

Recommended Dilutions:
It is recommended that this reagent should be titrated in each testing system to obtain optimal results.

Product Information

MP01760-3 targets HGF in immunoassays as a matched antibody pair. Validated in Sandwich ELISA.

Capture antibody: Mouse Hgf Recombinant antibody, PBS Only (Capture) 85014-4-PBS (242476C1). 100 µg. Concentration 1 mg/mL.

Detection antibody: Mouse HGF Recombinant antibody, PBS Only (Detector) 85014-3-PBS (242476H8). 100 µg. Concentration 1 mg/mL.

Unconjugated rabbit recombinant monoclonal antibody pair in PBS only storage buffer at a concentration of 1 mg/mL, ready for conjugation. Created using Proteintech's proprietary in-house recombinant technology. Recombinant production enables unrivalled batch-to-batch consistency, easy scale-up, and future security of supply.

Matched antibody pairs are designed for use in a variety of assays and platforms that require matched antibody pairs.

Antibody use should be optimized for each application and assay.

Storage

Storage:
Store at -80°C.
Storage buffer:
PBS only

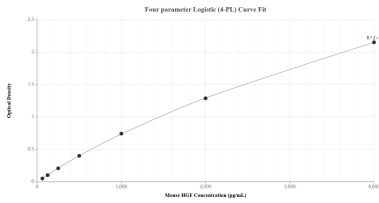
For technical support and original validation data for this product please contact:

T: 1 (888) 4PTGLAB (1-888-478-4522) (toll free in USA), or 1(312) 455-8498 (outside USA)

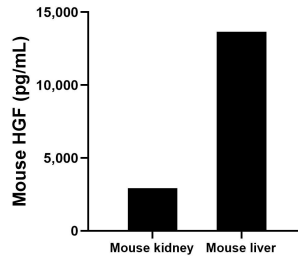
E: proteintech@ptglab.com
W: ptglab.com

This product is exclusively available under Proteintech Group brand and is not available to purchase from any other manufacturer.

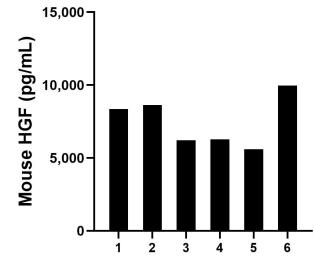
Selected Validation Data



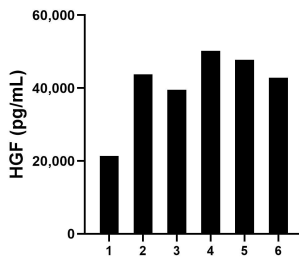
Sandwich ELISA standard curve of MP01760-3, Mouse HGF Recombinant Matched Antibody Pair - PBS only. 85014-4-PBS was coated to a plate as the capture antibody and incubated with serial dilutions of standard Eg0675. 85014-3-PBS was HRP conjugated as the detection antibody. Range: 62.5-4000 pg/mL



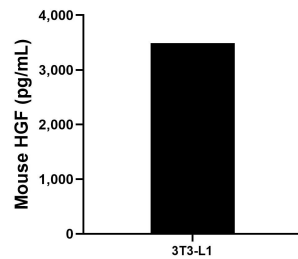
The mean HGF concentration was determined to be 2,919.6 pg/mL in mouse kidney tissue extract based on a 3.1 mg/mL extract load and 13,658.8 pg/mL in mouse liver tissue extract based on a 3.7 mg/mL extract load.



Serum of six mice was measured. The HGF concentration of detected samples was determined to be 7,505.4 pg/mL with a range of 5,590.3-9,962.8 pg/mL.



Serum of six rats was measured. The HGF concentration of detected samples was determined to be 40,922.2 pg/mL with a range of 21,345.0-50,183.1 pg/mL.



3T3-L1 cells were cultured in DMEM supplemented with 10% fetal bovine serum, 2.5 mM L-glutamine, 100 U/mL penicillin, and 100 µg/mL streptomycin sulfate. An aliquot of the cell culture supernate was removed, assayed for mouse HGF, and measured 3,491.8 pg/mL.