

C1r Recombinant Matched Antibody Pair, PBS Only

Catalog Number: **MP01761-1**

Capture Antibody Information

Catalog Number:
85029-1-PBS

Host:
Rabbit

Isotype:
IgG

Purification Method:
Protein A purification

Clone ID:
242596B12

Reactivity:
human

Immunogen Catalog Number:
Ag11390

Conjugate:
Unconjugated

Full name:
complement component 1, r subcomponent

Gene ID:
715

Detection Antibody Information

Catalog Number:
85029-3-PBS

Host:
Rabbit

Isotype:
IgG

Purification Method:
Protein A purification

Clone ID:
242596E7

Reactivity:
human

GenBank:
BC035220

Immunogen Catalog Number:
Ag11390

Conjugate:
Unconjugated

Full name:
complement component 1, r subcomponent

Gene ID:
715

Applications

Tested Applications:
Cytometric bead array, Sandwich ELISA

Range:
0.781-100 ng/mL (Cytometric Bead Array)
0.313-20 ng/mL (Sandwich ELISA)

Recommended Dilutions:
It is recommended that this reagent should be titrated in each testing system to obtain optimal results.

Product Information

MP01761-1 targets C1r in immunoassays as a matched antibody pair. Validated in Cytometric bead array, Sandwich ELISA.

Capture antibody: C1R Recombinant antibody, PBS Only (Capture) 85029-1-PBS (242596B12). 100 µg. Concentration 1 mg/mL.

Detection antibody: C1R Recombinant antibody, PBS Only (Detector) 85029-3-PBS (242596E7). 100 µg. Concentration 1 mg/mL.

Unconjugated rabbit recombinant monoclonal antibody pair in PBS only storage buffer at a concentration of 1 mg/mL, ready for conjugation. Created using Proteintech's proprietary in-house recombinant technology. Recombinant production enables unrivalled batch-to-batch consistency, easy scale-up, and future security of supply.

Matched antibody pairs are designed for use in a variety of assays and platforms that require matched antibody pairs.

Antibody use should be optimized for each application and assay.

Storage

Storage:
Store at -80°C.

Storage buffer:
PBS only

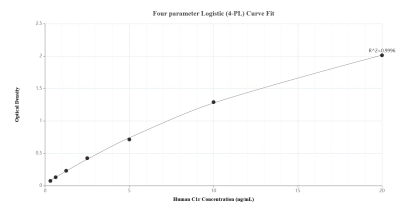
For technical support and original validation data for this product please contact:

T: 1 (888) 4PTGLAB (1-888-478-4522) (toll free in USA), or 1(312) 455-8498 (outside USA)

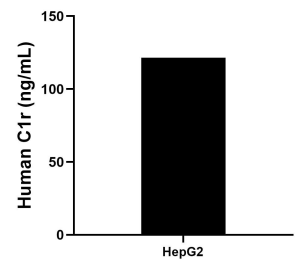
E: proteintech@ptglab.com
W: ptglab.com

This product is exclusively available under Proteintech Group brand and is not available to purchase from any other manufacturer.

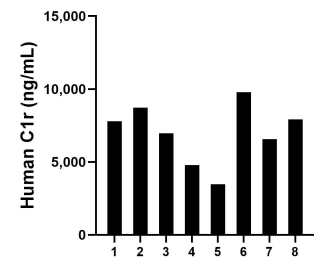
Selected Validation Data



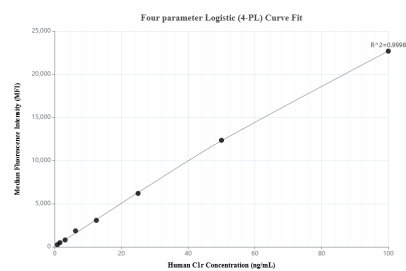
Sandwich ELISA standard curve of MP01761-1, Human C1r Recombinant Matched Antibody Pair - PBS only. 85029-1-PBS was coated to a plate as the capture antibody and incubated with serial dilutions of standard Ag11390. 85029-3-PBS was HRP conjugated as the detection antibody. Range: 0.313-20 ng/mL.



The mean C1r concentration was determined to be 121.59 ng/mL in HepG2 cell extract based on a 1.00 mg/mL extract load.



Serum of eight individual healthy human donors was measured. The C1r concentration of detected samples was determined to be 7,000.03 ng/mL with a range of 3,466.87-9,786.12 ng/mL.



Cytometric bead array standard curve of MP01761-1, C1r Recombinant Matched Antibody Pair, PBS Only. Capture antibody: 85029-1-PBS. Detection antibody: 85029-3-PBS. Standard: Ag11390. Range: 0.781-100 ng/mL.