

NCR1 Recombinant Matched Antibody Pair, PBS Only

Catalog Number: **MP01763-1**

Capture Antibody Information

Catalog Number:
85021-2-PBS
Host:
Rabbit
Isotype:
IgG
Purification Method:
Protein A purification

Clone ID:
242549G12
Reactivity:
human

Conjugate:
Unconjugated
Full name:
natural cytotoxicity triggering receptor 1
Gene ID:
9437

Detection Antibody Information

Catalog Number:
85021-1-PBS
Host:
Rabbit
Isotype:
IgG
Purification Method:
Protein A purification

Clone ID:
242549E6
Reactivity:
human
GenBank:

Conjugate:
Unconjugated
Full name:
natural cytotoxicity triggering receptor 1
Gene ID:
9437

Applications

Tested Applications:
Cytometric bead array, Sandwich ELISA

Range:
0.313-40 ng/mL (Cytometric Bead Array)
78.1-5000 pg/mL (Sandwich ELISA)

Recommended Dilutions:
It is recommended that this reagent should be titrated in each testing system to obtain optimal results.

Product Information

MP01763-1 targets NCR1 in immunoassays as a matched antibody pair. Validated in Cytometric bead array, Sandwich ELISA.

Capture antibody: NKp46/NCR1/CD335 Recombinant antibody, PBS Only (Capture) 85021-2-PBS (242549G12). 100 µg. Concentration 1 mg/mL.

Detection antibody: NKp46/NCR1/CD335 Recombinant antibody, PBS Only (Capture/Detector) 85021-1-PBS (242549E6). 100 µg. Concentration 1 mg/mL.

Unconjugated rabbit recombinant monoclonal antibody pair in PBS only storage buffer at a concentration of 1 mg/mL, ready for conjugation. Created using Proteintech's proprietary in-house recombinant technology. Recombinant production enables unrivalled batch-to-batch consistency, easy scale-up, and future security of supply.

Matched antibody pairs are designed for use in a variety of assays and platforms that require matched antibody pairs.

Antibody use should be optimized for each application and assay.

Storage

Storage:
Store at -80°C.
Storage buffer:
PBS only

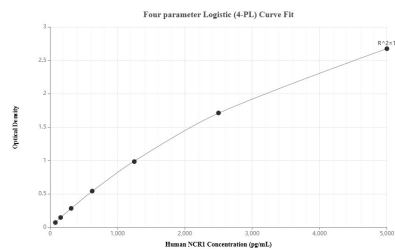
For technical support and original validation data for this product please contact:

T: 1 (888) 4PTGLAB (1-888-478-4522) (toll free in USA), or 1(312) 455-8498 (outside USA)

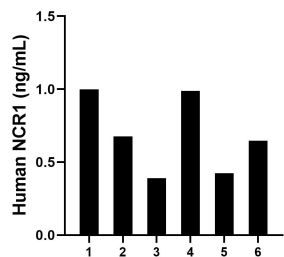
E: proteintech@ptglab.com
W: ptglab.com

This product is exclusively available under Proteintech Group brand and is not available to purchase from any other manufacturer.

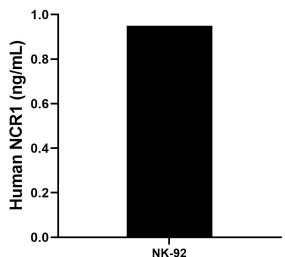
Selected Validation Data



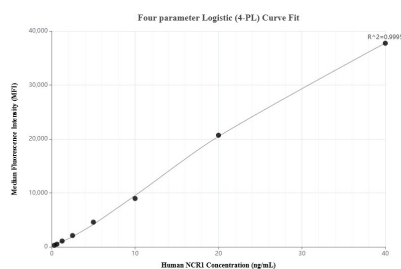
Sandwich ELISA standard curve of MP01763-1, Human NCR1 Recombinant Matched Antibody Pair - PBS only. 85021-2-PBS was coated to a plate as the capture antibody and incubated with serial dilutions of standard Eg1364. 85021-1-PBS was HRP conjugated as the detection antibody. Range: 78.1-5000 pg/mL



Serum of six individual healthy human donors was measured. The human NCR1 concentration of detected samples was determined to be 0.69 ng/mL with a range of 0.39 - 1.00 ng/mL



NK-92 cells (1×10^6 cells/mL) were cultured in DMEM supplemented with 10 % fetal bovine serum, 2.5 mM L-glutamine, 100 U/mL penicillin, and 100 μ g/mL streptomycin sulfate. The cell culture supernate was assayed for levels of NCR1 and measured 0.95 ng/mL



Cytometric bead array standard curve of MP01763-1, NCR1 Recombinant Matched Antibody Pair, PBS Only. Capture antibody: 85021-2-PBS. Detection antibody: 85021-1-PBS. Standard: Eg1364. Range: 0.313-40 ng/mL