

Mouse IL-1R2 Recombinant Matched Antibody Pair, PBS Only

Catalog Number: **MP01814-3**

Capture Antibody Information

Catalog Number:

85071-2-PBS

Host:

Rabbit

Isotype:

IgG

Purification Method:

Protein A purification

Clone ID:

242602C2

Reactivity:

mouse

Immunogen Catalog Number:

Eg2956

Conjugate:

Unconjugated

Full name:

interleukin 1 receptor, type II

Gene ID:

16178

Detection Antibody Information

Catalog Number:

85071-4-PBS

Host:

Rabbit

Isotype:

IgG

Purification Method:

Protein A purification

Clone ID:

242602B1

Reactivity:

mouse

GenBank:

NM_010555.4

Immunogen Catalog Number:

Eg2956

Conjugate:

Unconjugated

Full name:

interleukin 1 receptor, type II

Gene ID:

16178

Applications

Tested Applications:

Sandwich ELISA

Range:

39.1-2500 pg/mL (Sandwich ELISA)

Recommended Dilutions:

It is recommended that this reagent should be titrated in each testing system to obtain optimal results.

Product Information

MP01814-3 targets IL-1R2 in immunoassays as a matched antibody pair. Validated in Sandwich ELISA.

Capture antibody: Mouse IL1r2 Recombinant antibody, PBS Only (Capture) 85071-2-PBS (242602C2). 100 µg. Concentration 1 mg/mL.

Detection antibody: Mouse IL1r2 Recombinant antibody, PBS Only (Detector) 85071-4-PBS (242602B1). 100 µg. Concentration 1 mg/mL.

Unconjugated rabbit recombinant monoclonal antibody pair in PBS only storage buffer at a concentration of 1 mg/mL, ready for conjugation. Created using Proteintech's proprietary in-house recombinant technology. Recombinant production enables unrivalled batch-to-batch consistency, easy scale-up, and future security of supply.

Matched antibody pairs are designed for use in a variety of assays and platforms that require matched antibody pairs.

Antibody use should be optimized for each application and assay.

Storage

Storage:

Store at -80°C.

Storage buffer:

PBS only

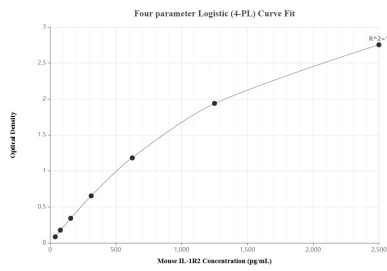
For technical support and original validation data for this product please contact:

T: 1 (888) 4PTGLAB (1-888-478-4522) (toll free in USA), or 1(312) 455-8498 (outside USA)

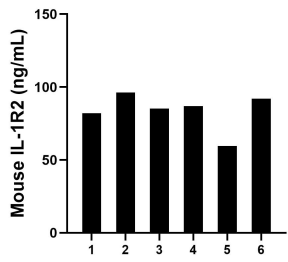
E: proteintech@ptglab.com
W: ptglab.com

This product is exclusively available under Proteintech Group brand and is not available to purchase from any other manufacturer.

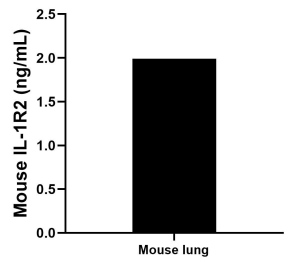
Selected Validation Data



Sandwich ELISA standard curve of MP01814-3, Mouse IL-1R2 Recombinant Matched Antibody Pair - PBS only. 85071-2-PBS was coated to a plate as the capture antibody and incubated with serial dilutions of standard Eg2956. 85071-4-PBS was HRP conjugated as the detection antibody. Range: 39.1-2500 pg/mL



Serum of six mice was measured. The IL-1R2 concentration of detected samples was determined to be 83.6 ng/mL with a range of 59.6-96.2 ng/mL



The mean IL-1R2 concentration was determined to be 2.0 ng/mL in mouse lung tissue extract based on a 5.3 mg/mL extract load.