

For Research Use Only



NDRG1 Recombinant Matched Antibody Pair, PBS Only

Catalog Number:MP01823-2

Capture Antibody Information

Catalog Number:
85141-2-PBS
Host:
Rabbit
Isotype:
IgG
Purification Method:
Protein A purification

Clone ID:
242322D3
Reactivity:
human
Immunogen Catalog Number:
Ag25424

Conjugate:
Unconjugated
Full name:
N-myc downstream regulated 1
Gene ID:
10397

Detection Antibody Information

Catalog Number:
85141-3-PBS
Host:
Rabbit
Isotype:
IgG
Purification Method:
Protein A purification

Clone ID:
242322F10
Reactivity:
human
GenBank:
BC006260
Immunogen Catalog Number:
Ag25424

Conjugate:
Unconjugated
Full name:
N-myc downstream regulated 1
Gene ID:
10397

Applications

Tested Applications:
Cytometric bead array, Sandwich
ELISA

Range:
0.781-100 ng/mL (Cytometric Bead
Array)
0.313-20 ng/mL (Sandwich ELISA)

Recommended Dilutions:
It is recommended that this reagent
should be titrated in each testing
system to obtain optimal results.

Product Information

MP01823-2 targets NDRG1 in immunoassays as a matched antibody pair. Validated in Cytometric bead array, Sandwich ELISA.

Capture antibody: NDRG1 Recombinant antibody, PBS Only (Capture) 85141-2-PBS (242322D3). 100 µg. Concentration 1 mg/mL.

Detection antibody: NDRG1 Recombinant antibody, PBS Only (Detector) 85141-3-PBS (242322F10). 100 µg. Concentration 1 mg/mL.

Unconjugated rabbit recombinant monoclonal antibody pair in PBS only storage buffer at a concentration of 1 mg/mL, ready for conjugation. Created using Proteintech's proprietary in-house recombinant technology. Recombinant production enables unrivalled batch-to-batch consistency, easy scale-up, and future security of supply.

Matched antibody pairs are designed for use in a variety of assays and platforms that require matched antibody pairs.

Antibody use should be optimized for each application and assay.

Storage

Storage:
Store at -80°C.
Storage buffer:
PBS only

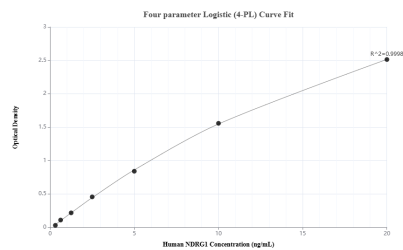
For technical support and original validation data for this product please contact:

T: 1 (888) 4PTGLAB (1-888-478-4522) (toll free
in USA), or 1(312) 455-8498 (outside USA)

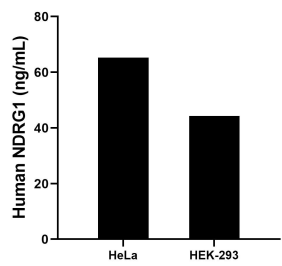
E: proteintech@ptglab.com
W: ptglab.com

This product is exclusively available under Proteintech Group brand and is not available to purchase from any other manufacturer.

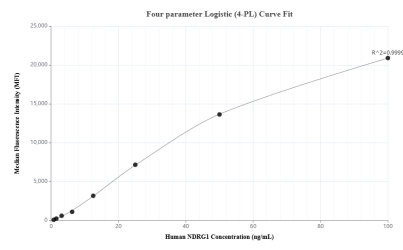
Selected Validation Data



Sandwich ELISA standard curve of MP01823-2, Humanc NDRG1 Recombinant Matched Antibody Pair - PBS only. 85141-2-PBS was coated to a plate as the capture antibody and incubated with serial dilutions of standard Ag25424. 85141-3-PBS was HRP conjugated as the detection antibody. Range: 0.313-20 ng/mL



The mean NDRG1 concentration was determined to be 65.20 ng/mL in HeLa cell extract based on a 1.5 mg/mL extract load and 44.27 ng/mL in HEK-293 cell extract based on a 2.7 mg/mL extract load.



Cytometric bead array standard curve of MP01823-2, NDRG1 Recombinant Matched Antibody Pair, PBS Only. Capture antibody: 85141-2-PBS. Detection antibody: 85141-3-PBS. Standard: Ag25424. Range: 0.781-100 ng/mL