

For Research Use Only

EPHB4 Recombinant Matched Antibody Pair, PBS Only



Catalog Number:MP01825-4

Capture Antibody Information

Catalog Number:
85139-8-PBS

Host:
Rabbit

Isotype:
IgG

Purification Method:
Protein A purification

Clone ID:
252186B7

Reactivity:
human

Immunogen Catalog Number:
Eg6504

Conjugate:
Unconjugated

Full name:
EPH receptor B4

Gene ID:
2050

Detection Antibody Information

Catalog Number:
85139-7-PBS

Host:
Rabbit

Isotype:
IgG

Purification Method:
Protein A purification

Clone ID:
252186B3

Reactivity:
human

GenBank:
NM_004444.4

Immunogen Catalog Number:
Eg6504

Conjugate:
Unconjugated

Full name:
EPH receptor B4

Gene ID:
2050

Applications

Tested Applications:
Sandwich ELISA

Range:
0.156-10 ng/mL (Sandwich ELISA)

Recommended Dilutions:
It is recommended that this reagent should be titrated in each testing system to obtain optimal results.

Product Information

MP01825-4 targets EPHB4 in immunoassays as a matched antibody pair. Validated in Sandwich ELISA.

Capture antibody: EPHB4 Recombinant monoclonal antibody, PBS Only (Capture) 85139-8-PBS (252186B7). 100 µg. Concentration 1 mg/mL.

Detection antibody: EPHB4 Recombinant monoclonal antibody, PBS Only (Detector) 85139-7-PBS (252186B3). 100 µg. Concentration 1 mg/mL.

Unconjugated rabbit recombinant monoclonal antibody pair in PBS only storage buffer at a concentration of 1 mg/mL, ready for conjugation. Created using Proteintech's proprietary in-house recombinant technology. Recombinant production enables unrivalled batch-to-batch consistency, easy scale-up, and future security of supply.

Matched antibody pairs are designed for use in a variety of assays and platforms that require matched antibody pairs.

Antibody use should be optimized for each application and assay.

Storage

Storage:
Store at -80°C.
Storage buffer:
PBS only

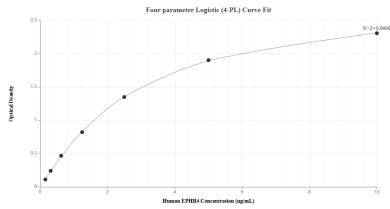
For technical support and original validation data for this product please contact:

T: 1 (888) 4PTGLAB (1-888-478-4522) (toll free in USA), or 1(312) 455-8498 (outside USA)

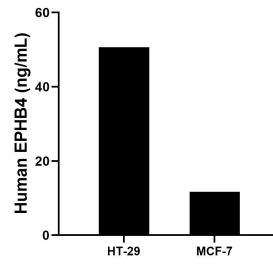
E: proteintech@ptglab.com
W: ptglab.com

This product is exclusively available under Proteintech Group brand and is not available to purchase from any other manufacturer.

Selected Validation Data



Sandwich ELISA standard curve of MP01825-4, Human EPHB4 Recombinant Matched Antibody Pair - PBS only. 85139-8-PBS was coated to a plate as the capture antibody and incubated with serial dilutions of standard Eg6504. 85139-7-PBS was HRP conjugated as the detection antibody. Range: 0.156-10 ng/mL



The mean EPHB4 concentration was determined to be 50.62 ng/mL in HT-29 cell extract based on a 1.5 mg/mL extract load and 11.71 ng/mL in MCF-7 cell extract based on a 1.2 mg/mL extract load.