

# TIMM44 Recombinant Matched Antibody Pair, PBS Only

Catalog Number: **MP01826-3**

## Capture Antibody Information

**Catalog Number:**  
85134-1-PBS  
**Host:**  
Rabbit  
**Isotype:**  
IgG  
**Purification Method:**  
Protein A purification

**Clone ID:**  
242774D12  
**Reactivity:**  
human  
**Immunogen Catalog Number:**  
Ag4834

**Conjugate:**  
Unconjugated  
**Full name:**  
translocase of inner mitochondrial membrane 44 homolog (yeast)  
**Gene ID:**  
10469

## Detection Antibody Information

**Catalog Number:**  
85134-4-PBS  
**Host:**  
Rabbit  
**Isotype:**  
IgG  
**Purification Method:**  
Protein A purification

**Clone ID:**  
242774C10  
**Reactivity:**  
human  
**GenBank:**  
BC033628  
**Immunogen Catalog Number:**  
Ag4834

**Conjugate:**  
Unconjugated  
**Full name:**  
translocase of inner mitochondrial membrane 44 homolog (yeast)  
**Gene ID:**  
10469

## Applications

**Tested Applications:**  
Sandwich ELISA

**Range:**  
0.156-10 ng/mL (Sandwich ELISA)

**Recommended Dilutions:**  
It is recommended that this reagent should be titrated in each testing system to obtain optimal results.

## Product Information

MP01826-3 targets TIMM44 in immunoassays as a matched antibody pair. Validated in Sandwich ELISA.

Capture antibody: TIMM44 Recombinant antibody, PBS Only (Capture) 85134-1-PBS (242774D12). 100 µg. Concentration 1 mg/mL.

Detection antibody: TIMM44 Recombinant antibody, PBS Only (Detector) 85134-4-PBS (242774C10). 100 µg. Concentration 1 mg/mL.

Unconjugated rabbit recombinant monoclonal antibody pair in PBS only storage buffer at a concentration of 1 mg/mL, ready for conjugation. Created using Proteintech's proprietary in-house recombinant technology. Recombinant production enables unrivalled batch-to-batch consistency, easy scale-up, and future security of supply.

Matched antibody pairs are designed for use in a variety of assays and platforms that require matched antibody pairs.

Antibody use should be optimized for each application and assay.

## Storage

**Storage:**  
Store at -80°C.  
**Storage buffer:**  
PBS only

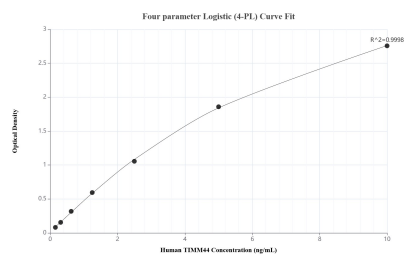
For technical support and original validation data for this product please contact:

T: 1 (888) 4PTGLAB (1-888-478-4522) (toll free in USA), or 1(312) 455-8498 (outside USA)

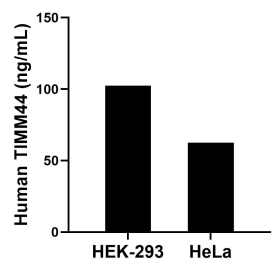
E: [proteintech@ptglab.com](mailto:proteintech@ptglab.com)  
W: [ptglab.com](http://ptglab.com)

**This product is exclusively available under Proteintech Group brand and is not available to purchase from any other manufacturer.**

## Selected Validation Data



Sandwich ELISA standard curve of MP01826-3, Human TIMM44 Recombinant Matched Antibody Pair - PBS only. 85134-1-PBS was coated to a plate as the capture antibody and incubated with serial dilutions of standard Ag4834. 85134-4-PBS was HRP conjugated as the detection antibody. Range: 0.156-10 ng/mL.



The mean TIMM44 concentration was determined to be 102.36 ng/mL in HEK-293 cell extract based on a 2.90 mg/mL extract load and 62.50 ng/mL in HeLa cell extract based on a 1.30 mg/mL extract load.