

Complement factor H Recombinant Matched Antibody Pair, PBS Only

Catalog Number: **MP01827-2**

Capture Antibody Information

Catalog Number:
85132-1-PBS
Host:
Rabbit
Isotype:
IgG
Purification Method:
Protein A purification

Clone ID:
242740C11
Reactivity:
human

Conjugate:
Unconjugated
Full name:
complement factor H
Gene ID:
3075

Detection Antibody Information

Catalog Number:
85132-3-PBS
Host:
Rabbit
Isotype:
IgG
Purification Method:
Protein A purification

Clone ID:
242740G2
Reactivity:
human
GenBank:

Conjugate:
Unconjugated
Full name:
complement factor H
Gene ID:
3075

Applications

Tested Applications:
Cytometric bead array, Sandwich
ELISA

Range:
0.781-100 ng/mL (Cytometric Bead
Array)
39.1-2500 pg/mL (Sandwich ELISA)

Recommended Dilutions:
It is recommended that this reagent
should be titrated in each testing
system to obtain optimal results.

Product Information

MP01827-2 targets Complement factor H in immunoassays as a matched antibody pair. Validated in Cytometric bead array, Sandwich ELISA.

Capture antibody: Complement factor H/CFH Recombinant antibody, PBS Only (Capture) 85132-1-PBS (242740C11). 100 µg. Concentration 1 mg/mL.

Detection antibody: Complement factor H/CFH Recombinant antibody, PBS Only (Detector) 85132-3-PBS (242740G2). 100 µg. Concentration 1 mg/mL.

Unconjugated rabbit recombinant monoclonal antibody pair in PBS only storage buffer at a concentration of 1 mg/mL, ready for conjugation. Created using Proteintech's proprietary in-house recombinant technology. Recombinant production enables unrivalled batch-to-batch consistency, easy scale-up, and future security of supply.

Matched antibody pairs are designed for use in a variety of assays and platforms that require matched antibody pairs.

Antibody use should be optimized for each application and assay.

Storage

Storage:
Store at -80°C.
Storage buffer:
PBS only

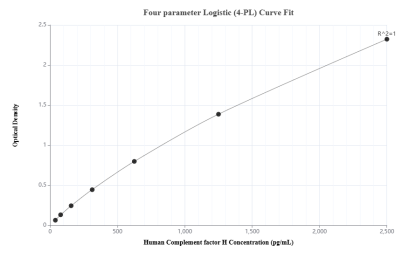
For technical support and original validation data for this product please contact:

T: 1 (888) 4PTGLAB (1-888-478-4522) (toll free
in USA), or 1(312) 455-8498 (outside USA)

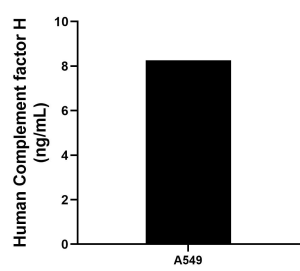
E: proteintech@ptglab.com
W: ptglab.com

**This product is exclusively available under Proteintech
Group brand and is not available to purchase from any
other manufacturer.**

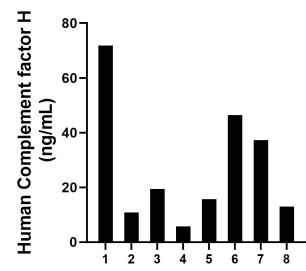
Selected Validation Data



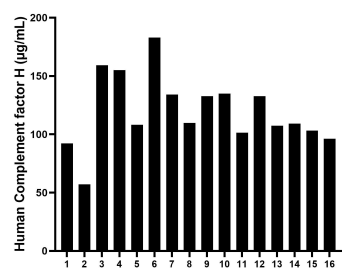
Sandwich ELISA standard curve of MP01827-2, Human Complement factor H Recombinant Matched Antibody Pair - PBS only. 85132-1-PBS was coated to a plate as the capture antibody and incubated with serial dilutions of standard Eg3753. 85132-3-PBS was HRP conjugated as the detection antibody. Range: 39.1-2500 µg/mL



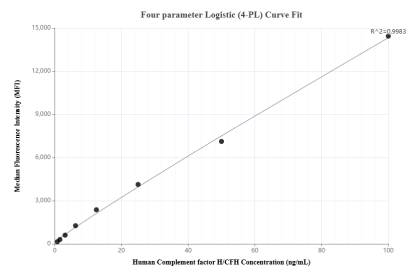
A549 human lung carcinoma cells were cultured in RPMI-1640 supplemented with 10% fetal bovine serum, 100 U/mL penicillin and 100 µg/mL streptomycin sulfate. An aliquot of the culture supernates were removed, assayed for human Complement factor H, and measured 8.26 ng/mL



Saliva of eight individual healthy human donors was measured. The human Complement factor H concentration of detected samples was determined to be 27.52 ng/mL with a range of 5.71-71.78 ng/mL



Serum of sixteen individual healthy human donors was measured. The human Complement factor H concentration of detected samples was determined to be 119.76 µg/mL with a range of 57.20 - 159.28 µg/mL



Cytometric bead array standard curve of MP01827-2, Complement factor H/CFH Recombinant Matched Antibody Pair, PBS Only. Capture antibody: 85132-1-PBS. Detection antibody: 85132-3-PBS. Standard: Eg3753. Range: 0.781-100 ng/mL