

AKAP1 Recombinant Matched Antibody Pair, PBS Only

Catalog Number: **MP01840-3**

Capture Antibody Information

Catalog Number:

85119-5-PBS

Host:

Rabbit

Isotype:

IgG

Purification Method:

Protein A purification

Clone ID:

242763G4

Reactivity:

human

Immunogen Catalog Number:

Ag8037

Conjugate:

Unconjugated

Full name:

A kinase (PRKA) anchor protein 1

Gene ID:

8165

Detection Antibody Information

Catalog Number:

85119-4-PBS

Host:

Rabbit

Isotype:

IgG

Purification Method:

Protein A purification

Clone ID:

242763D3

Reactivity:

human

GenBank:

BC000729

Immunogen Catalog Number:

Ag8037

Conjugate:

Unconjugated

Full name:

A kinase (PRKA) anchor protein 1

Gene ID:

8165

Applications

Tested Applications:

Sandwich ELISA

Range:

19.5-625 pg/mL (Sandwich ELISA)

Recommended Dilutions:

It is recommended that this reagent should be titrated in each testing system to obtain optimal results.

Product Information

MP01840-3 targets AKAP1 in immunoassays as a matched antibody pair. Validated in Sandwich ELISA.

Capture antibody: AKAP1 Recombinant antibody, PBS Only (Capture) 85119-5-PBS (242763G4). 100 µg. Concentration 1 mg/mL.

Detection antibody: AKAP1 Recombinant antibody, PBS Only (Detector) 85119-4-PBS (242763D3). 100 µg. Concentration 1 mg/mL.

Unconjugated rabbit recombinant monoclonal antibody pair in PBS only storage buffer at a concentration of 1 mg/mL, ready for conjugation. Created using Proteintech's proprietary in-house recombinant technology. Recombinant production enables unrivalled batch-to-batch consistency, easy scale-up, and future security of supply.

Matched antibody pairs are designed for use in a variety of assays and platforms that require matched antibody pairs.

Antibody use should be optimized for each application and assay.

Storage

Storage:

Store at -80°C.

Storage buffer:

PBS only

For technical support and original validation data for this product please contact:

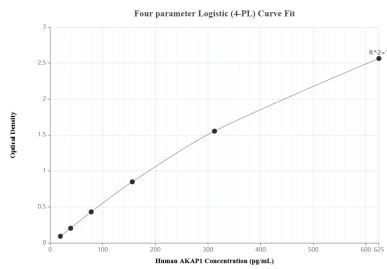
T: 1 (888) 4PTGLAB (1-888-478-4522) (toll free in USA), or 1(312) 455-8498 (outside USA)

E: proteintech@ptglab.com

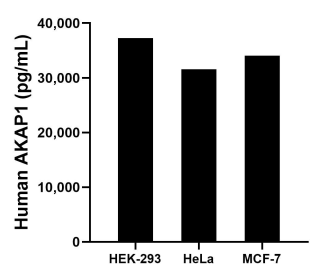
W: ptglab.com

This product is exclusively available under Proteintech Group brand and is not available to purchase from any other manufacturer.

Selected Validation Data



Sandwich ELISA standard curve of MP01840-3, Human AKAP1 Recombinant Matched Antibody Pair - PBS only. 85119-5-PBS was coated to a plate as the capture antibody and incubated with serial dilutions of standard Ag8037. 85119-4-PBS was HRP conjugated as the detection antibody. Range: 19.5-625 pg/mL



The mean AKAP1 concentration was determined to be 37,245.6 pg/mL in HEK-293 cell extract based on a 2.7 mg/mL extract load, 31,538.9 pg/mL in HeLa cell extract based on a 1.5 mg/mL extract load and 34,041.8 pg/mL in MCF-7 cell extract based on a 3.5 mg/mL extract load.