

Mouse Pon2 Recombinant Matched Antibody Pair, PBS Only

Catalog Number: **MP01843-1**

Capture Antibody Information

Catalog Number:
85126-4-PBS
Host:
Rabbit
Isotype:
IgG
Purification Method:
Protein A purification

Clone ID:
242673H1
Reactivity:
mouse, rat
Immunogen Catalog Number:
Eg2741

Conjugate:
Unconjugated
Full name:
paraoxonase 2
Gene ID:
330260

Detection Antibody Information

Catalog Number:
85126-2-PBS
Host:
Rabbit
Isotype:
IgG
Purification Method:
Protein A purification

Clone ID:
242673D8
Reactivity:
mouse
GenBank:
NM_183308.2
Immunogen Catalog Number:
Eg2741

Conjugate:
Unconjugated
Full name:
paraoxonase 2
Gene ID:
330260

Applications

Tested Applications:
Cytometric bead array, Sandwich ELISA

Range:
1.563-200 ng/mL (Cytometric Bead Array)
0.391-25 ng/mL (Sandwich ELISA)

Recommended Dilutions:
It is recommended that this reagent should be titrated in each testing system to obtain optimal results.

Product Information

MP01843-1 targets Pon2 in immunoassays as a matched antibody pair. Validated in Cytometric bead array, Sandwich ELISA.

Capture antibody: Mouse PON2 Recombinant antibody, PBS Only (Capture) 85126-4-PBS (242673H1). 100 µg. Concentration 1 mg/mL.

Detection antibody: Mouse PON2 Recombinant antibody, PBS Only (Detector) 85126-2-PBS (242673D8). 100 µg. Concentration 1 mg/mL.

Unconjugated rabbit recombinant monoclonal antibody pair in PBS only storage buffer at a concentration of 1 mg/mL, ready for conjugation. Created using Proteintech's proprietary in-house recombinant technology. Recombinant production enables unrivalled batch-to-batch consistency, easy scale-up, and future security of supply.

Matched antibody pairs are designed for use in a variety of assays and platforms that require matched antibody pairs.

Antibody use should be optimized for each application and assay.

Storage

Storage:
Store at -80°C.
Storage buffer:
PBS only

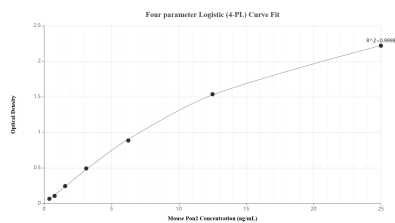
For technical support and original validation data for this product please contact:

T: 1 (888) 4PTGLAB (1-888-478-4522) (toll free in USA), or 1(312) 455-8498 (outside USA)

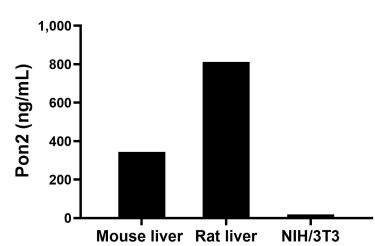
E: proteintech@ptglab.com
W: ptglab.com

This product is exclusively available under Proteintech Group brand and is not available to purchase from any other manufacturer.

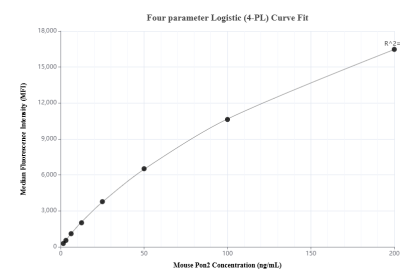
Selected Validation Data



Sandwich ELISA standard curve of MP01843-1, Mouse Pon2 Recombinant Matched Antibody Pair - PBS only. 85126-4-PBS was coated to a plate as the capture antibody and incubated with serial dilutions of standard Eg2741. 85126-2-PBS was HRP conjugated as the detection antibody. Range: 0.391-25 ng/mL.



The mean Pon2 concentration was determined to be 344.03 ng/mL in mouse liver tissue extract based on a 3.70 mg/mL extract load, 812.45 ng/mL in rat liver tissue extract based on a 2.60 mg/mL extract load and 19.36 ng/mL in NIH/3T3 cell extract based on a 1.50 mg/mL extract load.



Cytometric bead array standard curve of MP01843-1, MOUSE Pon2 Recombinant Matched Antibody Pair, PBS Only. Capture antibody: 85126-4-PBS. Detection antibody: 85126-2-PBS. Standard: Eg2741. Range: 1.563-200 ng/mL.