

For Research Use Only

Mouse Foxp3 Recombinant Matched Antibody Pair, PBS Only



Catalog Number:MP01845-2

Capture Antibody Information

Catalog Number:
85128-1-PBS
Host:
Rabbit
Isotype:
IgG
Purification Method:
Protein A purification

Clone ID:
242674B3
Reactivity:
mouse

Conjugate:
Unconjugated
Full name:
forkhead box P3
Gene ID:
20371

Detection Antibody Information

Catalog Number:
85128-2-PBS
Host:
Rabbit
Isotype:
IgG
Purification Method:
Protein A purification

Clone ID:
242674G3
Reactivity:
mouse
GenBank:

Conjugate:
Unconjugated
Full name:
forkhead box P3
Gene ID:
20371

Applications

Tested Applications:
Cytometric bead array, Sandwich
ELISA

Range:
0.781-100 ng/mL (Cytometric Bead
Array)
0.156-10 ng/mL (Sandwich ELISA)

Recommended Dilutions:
It is recommended that this reagent
should be titrated in each testing
system to obtain optimal results.

Product Information

MP01845-2 targets Foxp3 in immunoassays as a matched antibody pair. Validated in Cytometric bead array, Sandwich ELISA.

Capture antibody: Mouse Foxp3 Recombinant antibody, PBS Only (Capture) 85128-1-PBS (242674B3). 100 µg. Concentration 1 mg/mL.

Detection antibody: Mouse Foxp3 Recombinant antibody, PBS Only (Detector) 85128-2-PBS (242674G3). 100 µg. Concentration 1 mg/mL.

Unconjugated rabbit recombinant monoclonal antibody pair in PBS only storage buffer at a concentration of 1 mg/mL, ready for conjugation. Created using Proteintech's proprietary in-house recombinant technology. Recombinant production enables unrivalled batch-to-batch consistency, easy scale-up, and future security of supply.

Matched antibody pairs are designed for use in a variety of assays and platforms that require matched antibody pairs.

Antibody use should be optimized for each application and assay.

Storage

Storage:
Store at -80°C.
Storage buffer:
PBS only

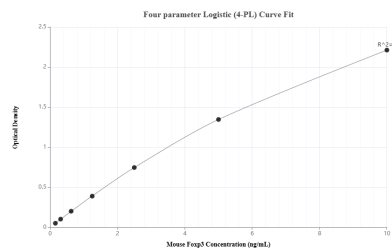
For technical support and original validation data for this product please contact:

T: 1 (888) 4PTGLAB (1-888-478-4522) (toll free
in USA), or 1(312) 455-8498 (outside USA)

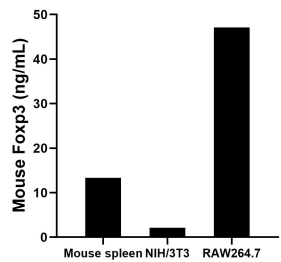
E: proteintech@ptglab.com
W: ptglab.com

This product is exclusively available under Proteintech Group brand and is not available to purchase from any other manufacturer.

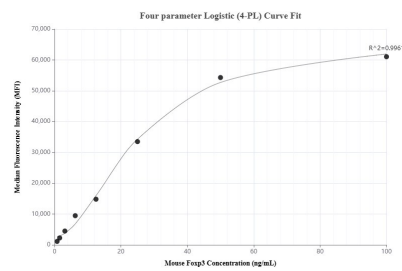
Selected Validation Data



Sandwich ELISA standard curve of MP01845-2, Mouse Fcγ3 Recombinant Matched Antibody Pair - PBS only. 85128-1-PBS was coated to a plate as the capture antibody and incubated with serial dilutions of standard Eg4361. 85128-2-PBS was HRP conjugated as the detection antibody. Range: 0.156-10 ng/mL



The mean Fcγ3 concentration was determined to be 13.33 ng/mL in mouse spleen tissue extract based on a 8.4 mg/mL extract load, 2.13 ng/mL in NIH/3T3 cell extract based on a 1.5 mg/mL extract load, and 47.11 ng/mL in RAW264.7 cell extract based on a 1.3 mg/mL extract load.



Cytometric bead array standard curve of MP01845-2, MOUSE Fcγ3 Recombinant Matched Antibody Pair, PBS Only. Capture antibody: 85128-1-PBS. Detection antibody: 85128-2-PBS. Standard: Eg4360. Range: 0.781-100 ng/mL