

# Mouse CD13 Recombinant Matched Antibody Pair, PBS Only

Catalog Number: **MP01861-3**

## Capture Antibody Information

**Catalog Number:**  
85152-1-PBS  
**Host:**  
Rabbit  
**Isotype:**  
IgG  
**Purification Method:**  
Protein A purification

**Clone ID:**  
242845A1  
**Reactivity:**  
mouse  
**Immunogen Catalog Number:**  
Eg3592

**Conjugate:**  
Unconjugated  
**Full name:**  
alanyl (membrane) aminopeptidase  
**Gene ID:**  
16790

## Detection Antibody Information

**Catalog Number:**  
85152-2-PBS  
**Host:**  
Rabbit  
**Isotype:**  
IgG  
**Purification Method:**  
Protein A purification

**Clone ID:**  
242845B3  
**Reactivity:**  
mouse  
**GenBank:**  
NM\_008486.2  
**Immunogen Catalog Number:**  
Eg3592

**Conjugate:**  
Unconjugated  
**Full name:**  
alanyl (membrane) aminopeptidase  
**Gene ID:**  
16790

## Applications

**Tested Applications:**  
Sandwich ELISA

**Range:**  
0.391-25 ng/mL (Sandwich ELISA)

**Recommended Dilutions:**  
It is recommended that this reagent should be titrated in each testing system to obtain optimal results.

## Product Information

MP01861-3 targets CD13 in immunoassays as a matched antibody pair. Validated in Sandwich ELISA.

Capture antibody: Mouse CD13 Recombinant antibody, PBS Only (Capture) 85152-1-PBS (242845A1). 100 µg. Concentration 1 mg/mL.

Detection antibody: Mouse CD13 Recombinant antibody, PBS Only (Capture/Detector) 85152-2-PBS (242845B3). 100 µg. Concentration 1 mg/mL.

Unconjugated rabbit recombinant monoclonal antibody pair in PBS only storage buffer at a concentration of 1 mg/mL, ready for conjugation. Created using Proteintech's proprietary in-house recombinant technology. Recombinant production enables unrivalled batch-to-batch consistency, easy scale-up, and future security of supply.

Matched antibody pairs are designed for use in a variety of assays and platforms that require matched antibody pairs.

Antibody use should be optimized for each application and assay.

## Storage

**Storage:**  
Store at -80°C.  
**Storage buffer:**  
PBS only

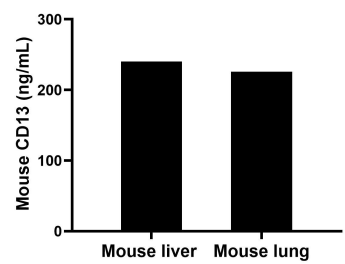
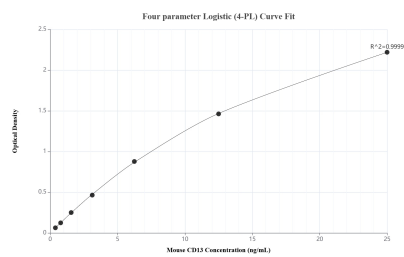
For technical support and original validation data for this product please contact:

T: 1 (888) 4PTGLAB (1-888-478-4522) (toll free in USA), or 1(312) 455-8498 (outside USA)

E: [proteintech@ptglab.com](mailto:proteintech@ptglab.com)  
W: [ptglab.com](http://ptglab.com)

**This product is exclusively available under Proteintech Group brand and is not available to purchase from any other manufacturer.**

## Selected Validation Data



Sandwich ELISA standard curve of MP01861-3, Mouse CD13 Recombinant Matched Antibody Pair - PBS only. 85152-1-PBS was coated to a plate as the capture antibody and incubated with serial dilutions of standard Eg3592. 85152-2-PBS was HRP conjugated as the detection antibody. Range: 0.391-25 ng/mL.

The mean CD13 concentration was determined to be 240.44 ng/mL in mouse liver tissue extract based on a 3.70 mg/mL extract load and 226.10 ng/mL in mouse lung tissue extract based on a 5.90 mg/mL extract load.