

CD62L Recombinant Matched Antibody Pair, PBS Only

Catalog Number: **MP01864-3**

Capture Antibody Information

Catalog Number:
85111-3-PBS
Host:
Rabbit
Isotype:
IgG
Purification Method:
Protein A purification

Clone ID:
242283F9
Reactivity:
human

Conjugate:
Unconjugated
Full name:
selectin L
Gene ID:
6402

Detection Antibody Information

Catalog Number:
85111-1-PBS
Host:
Rabbit
Isotype:
IgG
Purification Method:
Protein A purification

Clone ID:
242283A4
Reactivity:
human
GenBank:
NM_000655.5

Conjugate:
Unconjugated
Full name:
selectin L
Gene ID:
6402

Applications

Tested Applications:
Sandwich ELISA

Range:
78.1-5000 pg/mL (Sandwich ELISA)

Recommended Dilutions:
It is recommended that this reagent should be titrated in each testing system to obtain optimal results.

Product Information

MP01864-3 targets CD62L in immunoassays as a matched antibody pair. Validated in Sandwich ELISA.

Capture antibody: SELL Recombinant antibody, PBS Only (Capture/Detector) 85111-3-PBS (242283F9). 100 µg. Concentration 1 mg/mL.

Detection antibody: SELL Recombinant antibody, PBS Only (Capture/Detector) 85111-1-PBS (242283A4). 100 µg. Concentration 1 mg/mL.

Unconjugated rabbit recombinant monoclonal antibody pair in PBS only storage buffer at a concentration of 1 mg/mL, ready for conjugation. Created using Proteintech's proprietary in-house recombinant technology. Recombinant production enables unrivalled batch-to-batch consistency, easy scale-up, and future security of supply.

Matched antibody pairs are designed for use in a variety of assays and platforms that require matched antibody pairs.

Antibody use should be optimized for each application and assay.

Storage

Storage:
Store at -80°C.
Storage buffer:
PBS only

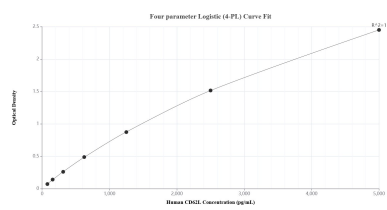
For technical support and original validation data for this product please contact:

T: 1 (888) 4PTGLAB (1-888-478-4522) (toll free in USA), or 1(312) 455-8498 (outside USA)

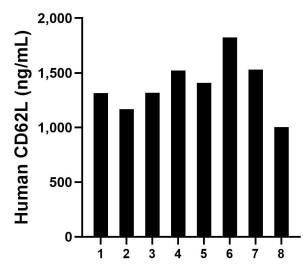
E: proteintech@ptglab.com
W: ptglab.com

This product is exclusively available under Proteintech Group brand and is not available to purchase from any other manufacturer.

Selected Validation Data



Sandwich ELISA standard curve of MP01864-3, Human CD62L Recombinant Matched Antibody Pair - PBS only. 85111-3-PBS was coated to a plate as the capture antibody and incubated with serial dilutions of standard Eg3006. 85111-1-PBS was HRP conjugated as the detection antibody. Range: 78.1-5000 pg/mL



Serum of eight individual healthy human donors was measured. The CD62L concentration of detected samples was determined to be 1,385.8 pg/mL with a range of 1,003.9-1,823.7 pg/mL