

For Research Use Only

Mouse DPP4/CD26 Recombinant Matched Antibody Pair, PBS Only



Catalog Number:MP01879-3

Capture Antibody Information

Catalog Number:	Clone ID:	Conjugate:
85159-4-PBS	242823E7	Unconjugated
Host:	Reactivity:	Full name:
Rabbit	mouse	dipeptidylpeptidase 4
Isotype:	Immunogen Catalog Number:	Gene ID:
IgG	Eg1384	13482
Purification Method:		
Protein A purification		

Detection Antibody Information

Catalog Number:	Clone ID:	Conjugate:
85159-2-PBS	242823D2	Unconjugated
Host:	Reactivity:	Full name:
Rabbit	mouse	dipeptidylpeptidase 4
Isotype:	GenBank:	Gene ID:
IgG	NM_010074.3	13482
Purification Method:	Immunogen Catalog Number:	
Protein A purification	Eg1384	

Applications

Tested Applications:	Range:	Recommended Dilutions:
Sandwich ELISA	0.391-25 ng/mL (Sandwich ELISA)	It is recommended that this reagent should be titrated in each testing system to obtain optimal results.

Product Information

MP01879-3 targets DPP4/CD26 in immunoassays as a matched antibody pair. Validated in Sandwich ELISA.

Capture antibody: Mouse DPP4/CD26 Recombinant antibody, PBS Only (Capture) 85159-4-PBS (242823E7). 100 µg. Concentration 1 mg/mL.

Detection antibody: Mouse DPP4/CD26 Recombinant antibody, PBS Only (Detector) 85159-2-PBS (242823D2). 100 µg. Concentration 1 mg/mL.

Unconjugated rabbit recombinant monoclonal antibody pair in PBS only storage buffer at a concentration of 1 mg/mL, ready for conjugation. Created using Proteintech's proprietary in-house recombinant technology. Recombinant production enables unrivalled batch-to-batch consistency, easy scale-up, and future security of supply.

Matched antibody pairs are designed for use in a variety of assays and platforms that require matched antibody pairs.

Antibody use should be optimized for each application and assay.

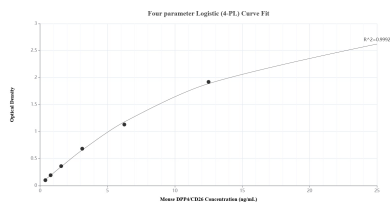
Storage

Storage:
Store at -80°C.
Storage buffer:
PBS only

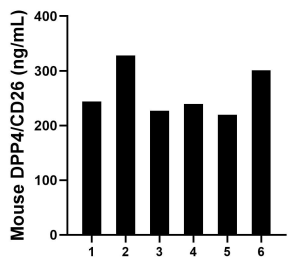
For technical support and original validation data for this product please contact:
T: 1 (888) 4PTGLAB (1-888-478-4522) (toll free in USA), or 1(312) 455-8498 (outside USA)
E: proteintech@ptglab.com
W: ptglab.com

This product is exclusively available under Proteintech Group brand and is not available to purchase from any other manufacturer.

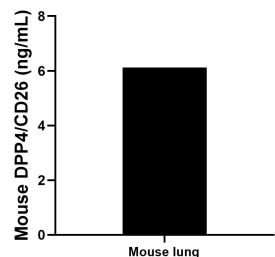
Selected Validation Data



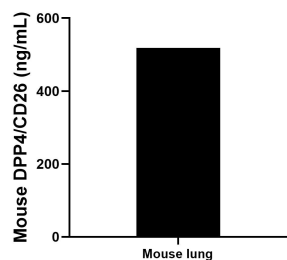
Sandwich ELISA standard curve of MP01879-3, Mouse DPP4/CD26 Recombinant Matched Antibody Pair - PBS only. 85159-4-PBS was coated to a plate as the capture antibody and incubated with serial dilutions of standard Eg1384. 85159-2-PBS was HRP conjugated as the detection antibody. Range: 0.391-25 ng/mL



Serum of six mice was measured. The DPP4/CD26 concentration of detected samples was determined to be 259.81 ng/mL with a range of 219.51-328.25 ng/mL



Mouse lung (3 lungs in 1-2 mm pieces in 100 mL of medium) was cultured in RPMI supplemented. An aliquot of the cell culture supernatant was removed, assayed for DPP4/CD26, and measured 6.12 ng/mL



The mean DPP4/CD26 concentration was determined to be 518.45 ng/mL in mouse lung tissue extract based on a 5.90 mg/mL extract load.