

# Glycophorin A Recombinant Matched Antibody Pair, PBS Only

Catalog Number: **MP01888-2**

## Capture Antibody Information

**Catalog Number:**  
85182-1-PBS  
**Host:**  
Rabbit  
**Isotype:**  
IgG  
**Purification Method:**  
Protein A purification

**Clone ID:**  
242822C9  
**Reactivity:**  
human

**Conjugate:**  
Unconjugated  
**Full name:**  
glycophorin A (MNS blood group)  
**Gene ID:**  
2993

## Detection Antibody Information

**Catalog Number:**  
85182-3-PBS  
**Host:**  
Rabbit  
**Isotype:**  
IgG  
**Purification Method:**  
Protein A purification

**Clone ID:**  
242822H5  
**Reactivity:**  
human  
**GenBank:**  
BC005319

**Conjugate:**  
Unconjugated  
**Full name:**  
glycophorin A (MNS blood group)  
**Gene ID:**  
2993

## Applications

**Tested Applications:**  
Cytometric bead array

**Range:**  
0.313-40 ng/mL (Cytometric Bead Array)

**Recommended Dilutions:**  
It is recommended that this reagent should be titrated in each testing system to obtain optimal results.

## Product Information

MP01888-2 targets Glycophorin A in immunoassays as a matched antibody pair. Validated in Cytometric bead array.

Capture antibody: GYPA Recombinant antibody, PBS Only (Capture) 85182-1-PBS (242822C9). 100 µg. Concentration 1 mg/mL.

Detection antibody: GYPA Recombinant antibody, PBS Only (Detector) 85182-3-PBS (242822H5). 100 µg. Concentration 1 mg/mL.

Unconjugated rabbit recombinant monoclonal antibody pair in PBS only storage buffer at a concentration of 1 mg/mL, ready for conjugation. Created using Proteintech's proprietary in-house recombinant technology. Recombinant production enables unrivalled batch-to-batch consistency, easy scale-up, and future security of supply.

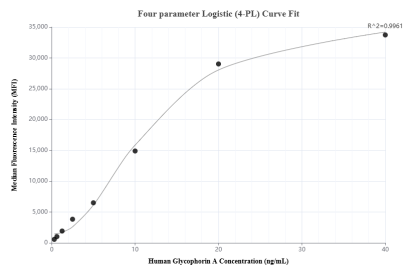
Matched antibody pairs are designed for use in a variety of assays and platforms that require matched antibody pairs.

Antibody use should be optimized for each application and assay.

## Storage

**Storage:**  
Store at -80°C.  
**Storage buffer:**  
PBS only

# Selected Validation Data



Cytometric bead array standard curve of MP01888-2, Glycophorin A Recombinant Matched Antibody Pair, PBS Only. Capture antibody: 85182-1-PBS. Detection antibody: 85182-3-PBS. Standard: Eg2336. Range: 0.313-40 ng/mL.