

# ICOSLG/B7-H2/CD275 Recombinant Matched Antibody Pair, PBS Only

Catalog Number: MP01890-1

## Capture Antibody Information

**Catalog Number:**  
85173-3-PBS  
**Host:**  
Rabbit  
**Isotype:**  
IgG  
**Purification Method:**  
Protein A purification

**Clone ID:**  
242241F5  
**Reactivity:**  
human

**Conjugate:**  
Unconjugated  
**Full name:**  
inducible T-cell co-stimulator ligand  
**Gene ID:**  
23308

## Detection Antibody Information

**Catalog Number:**  
85173-1-PBS  
**Host:**  
Rabbit  
**Isotype:**  
IgG  
**Purification Method:**  
Protein A purification

**Clone ID:**  
242241B5  
**Reactivity:**  
human  
**GenBank:**  
BC064637

**Conjugate:**  
Unconjugated  
**Full name:**  
inducible T-cell co-stimulator ligand  
**Gene ID:**  
23308

## Applications

**Tested Applications:**  
Cytometric bead array, Sandwich ELISA

**Range:**  
1.563-200 ng/mL (Cytometric Bead Array)  
3.13-200 ng/mL (Sandwich ELISA)

**Recommended Dilutions:**  
It is recommended that this reagent should be titrated in each testing system to obtain optimal results.

## Product Information

MP01890-1 targets ICOSLG/B7-H2/CD275 in immunoassays as a matched antibody pair. Validated in Cytometric bead array, Sandwich ELISA.

Capture antibody: ICOSLG Recombinant antibody, PBS Only (Capture) 85173-3-PBS (242241F5). 100 µg. Concentration 1 mg/mL.

Detection antibody: ICOSLG Recombinant antibody, PBS Only (Capture/Detector) 85173-1-PBS (242241B5). 100 µg. Concentration 1 mg/mL.

Unconjugated rabbit recombinant monoclonal antibody pair in PBS only storage buffer at a concentration of 1 mg/mL, ready for conjugation. Created using Proteintech's proprietary in-house recombinant technology. Recombinant production enables unrivalled batch-to-batch consistency, easy scale-up, and future security of supply.

Matched antibody pairs are designed for use in a variety of assays and platforms that require matched antibody pairs.

Antibody use should be optimized for each application and assay.

## Storage

**Storage:**  
Store at -80°C.  
**Storage buffer:**  
PBS only

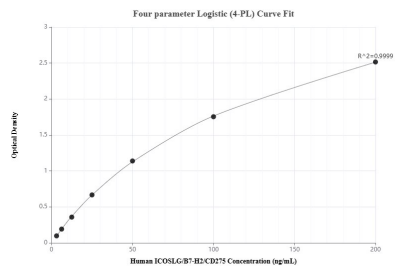
For technical support and original validation data for this product please contact:

T: 1 (888) 4PTGLAB (1-888-478-4522) (toll free in USA), or 1(312) 455-8498 (outside USA)

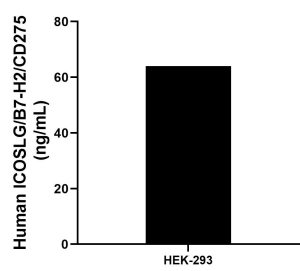
E: [proteintech@ptglab.com](mailto:proteintech@ptglab.com)  
W: [ptglab.com](http://ptglab.com)

This product is exclusively available under Proteintech Group brand and is not available to purchase from any other manufacturer.

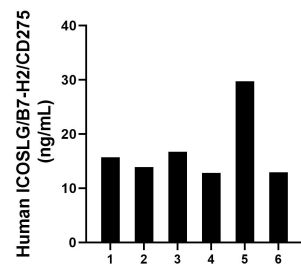
# Selected Validation Data



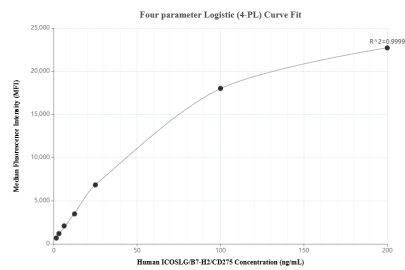
Sandwich ELISA standard curve of MP01890-1, Human ICOSLG/B7-H2/CD275 Recombinant Matched Antibody Pair - PBS only. 85173-3-PBS was coated to a plate as the capture antibody and incubated with serial dilutions of standard Eg0008. 85173-1-PBS was HRP conjugated as the detection antibody. Range: 3.13-200 ng/mL



The mean ICOSLG/B7-H2/CD275 concentration was determined to be 63.95 ng/mL in HEK-293 cell extract based on a 2.7 mg/mL extract load.



Serum of six individual healthy human donors was measured. The human ICOSLG/B7-H2/CD275 concentration of detected samples was determined to be 16.96 ng/mL with a range of 12.81 - 29.75 ng/mL.



Cytometric bead array standard curve of MP01890-1, ICOSLG/B7-H2/CD275 Recombinant Matched Antibody Pair, PBS Only. Capture antibody: 85173-3-PBS. Detection antibody: 85173-1-PBS. Standard: Eg0008. Range: 1.563-200 ng/mL