

For Research Use Only



# GREB1 Recombinant Matched Antibody Pair, PBS Only

Catalog Number:MP01893-3

## Capture Antibody Information

Catalog Number:  
85189-2-PBS  
Host:  
Rabbit  
Isotype:  
IgG  
Purification Method:  
Protein A purification

Clone ID:  
242882B12  
Reactivity:  
human  
Immunogen Catalog Number:  
Ag29908

Conjugate:  
Unconjugated  
Full name:  
GREB1 protein  
Gene ID:  
9687

## Detection Antibody Information

Catalog Number:  
85189-1-PBS  
Host:  
Rabbit  
Isotype:  
IgG  
Purification Method:  
Protein A purification

Clone ID:  
242882A3  
Reactivity:  
human  
GenBank:  
NM\_014668  
Immunogen Catalog Number:  
Ag29908

Conjugate:  
Unconjugated  
Full name:  
GREB1 protein  
Gene ID:  
9687

## Applications

Tested Applications:  
Sandwich ELISA

Range:  
0.156-10 ng/mL (Sandwich ELISA)

Recommended Dilutions:  
It is recommended that this reagent should be titrated in each testing system to obtain optimal results.

## Product Information

MP01893-3 targets GREB1 in immunoassays as a matched antibody pair. Validated in Sandwich ELISA.

Capture antibody: GREB1 Recombinant antibody, PBS Only (Capture) 85189-2-PBS (242882B12). 100 µg. Concentration 1 mg/mL.

Detection antibody: GREB1 Recombinant antibody, PBS Only (Detector) 85189-1-PBS (242882A3). 100 µg. Concentration 1 mg/mL.

Unconjugated rabbit recombinant monoclonal antibody pair in PBS only storage buffer at a concentration of 1 mg/mL, ready for conjugation. Created using Proteintech's proprietary in-house recombinant technology. Recombinant production enables unrivalled batch-to-batch consistency, easy scale-up, and future security of supply.

Matched antibody pairs are designed for use in a variety of assays and platforms that require matched antibody pairs.

Antibody use should be optimized for each application and assay.

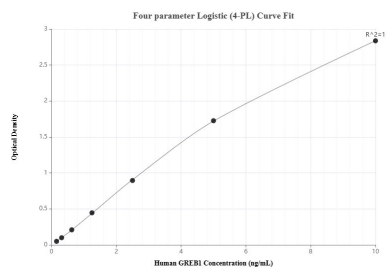
## Storage

Storage:  
Store at -80°C.  
Storage buffer:  
PBS only

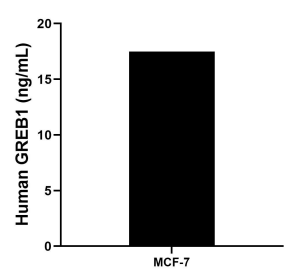
For technical support and original validation data for this product please contact:  
T: 1 (888) 4PTGLAB (1-888-478-4522) (toll free in USA), or 1(312) 455-8498 (outside USA)  
E: [proteintech@ptglab.com](mailto:proteintech@ptglab.com)  
W: [ptglab.com](http://ptglab.com)

This product is exclusively available under Proteintech Group brand and is not available to purchase from any other manufacturer.

## Selected Validation Data



Sandwich ELISA standard curve of MP01893-3, Human GREB1 Recombinant Matched Antibody Pair - PBS only. 85189-2-PBS was coated to a plate as the capture antibody and incubated with serial dilutions of standard Ag29908. 85189-1-PBS was HRP conjugated as the detection antibody. Range: 0.156-10 ng/mL



The mean GREB1 concentration was determined to be 17.48 ng/mL in MCF-7 cell extract based on a 3.5 mg/mL extract load.