

MAFF Recombinant Matched Antibody Pair, PBS Only

Catalog Number: **MP01898-1**

Capture Antibody Information

Catalog Number:
85186-1-PBS
Host:
Rabbit
Isotype:
IgG
Purification Method:
Protein A purification

Clone ID:
242859B8
Reactivity:
human
Immunogen Catalog Number:
Ag3460

Conjugate:
Unconjugated
Full name:
v-maf musculoaponeurotic
fibrosarcoma oncogene homolog F
(avian)
Gene ID:
23764

Detection Antibody Information

Catalog Number:
85186-2-PBS
Host:
Rabbit
Isotype:
IgG
Purification Method:
Protein A purification

Clone ID:
242859C4
Reactivity:
human
GenBank:
BC015037
Immunogen Catalog Number:
Ag3460

Conjugate:
Unconjugated
Full name:
v-maf musculoaponeurotic
fibrosarcoma oncogene homolog F
(avian)
Gene ID:
23764

Applications

Tested Applications:
Cytometric bead array, Sandwich
ELISA

Range:
0.781-100 ng/mL (Cytometric Bead
Array)
0.313-20 ng/mL (Sandwich ELISA)

Recommended Dilutions:
It is recommended that this reagent
should be titrated in each testing
system to obtain optimal results.

Product Information

MP01898-1 targets MAFF in immunoassays as a matched antibody pair. Validated in Cytometric bead array, Sandwich ELISA.

Capture antibody: MAFF Recombinant antibody, PBS Only (Capture) 85186-1-PBS (242859B8). 100 µg. Concentration 1 mg/mL.

Detection antibody: MAFF Recombinant antibody, PBS Only (Detector) 85186-2-PBS (242859C4). 100 µg. Concentration 1 mg/mL.

Unconjugated rabbit recombinant monoclonal antibody pair in PBS only storage buffer at a concentration of 1 mg/mL, ready for conjugation. Created using Proteintech's proprietary in-house recombinant technology. Recombinant production enables unrivalled batch-to-batch consistency, easy scale-up, and future security of supply.

Matched antibody pairs are designed for use in a variety of assays and platforms that require matched antibody pairs.

Antibody use should be optimized for each application and assay.

Storage

Storage:
Store at -80°C.
Storage buffer:
PBS only

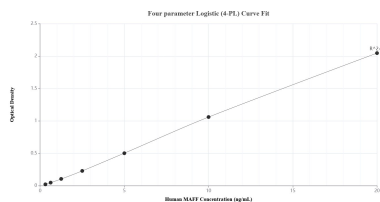
For technical support and original validation data for this product please contact:

T: 1 (888) 4PTGLAB (1-888-478-4522) (toll free
in USA), or 1(312) 455-8498 (outside USA)

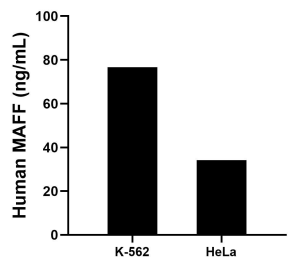
E: proteintech@ptglab.com
W: ptglab.com

This product is exclusively available under Proteintech Group brand and is not available to purchase from any other manufacturer.

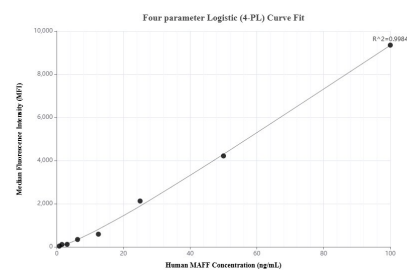
Selected Validation Data



Sandwich ELISA standard curve of MP01898-1, Human MAFF Recombinant Matched Antibody Pair - PBS only. 85186-1-PBS was coated to a plate as the capture antibody and incubated with serial dilutions of standard Ag3460. 85186-2-PBS was HRP conjugated as the detection antibody. Range: 0.313-20 ng/mL



The mean MAFF concentration was determined to be 76.59 ng/mL in K-562 cell extract based on a 2.50 mg/mL extract load and 34.12 ng/mL in HeLa cell extract based on a 2.10 mg/mL extract load.



Cytometric bead array standard curve of MP01898-1, MAFF Recombinant Matched Antibody Pair, PBS Only. Capture antibody: 85186-1-PBS. Detection antibody: 85186-2-PBS. Standard: Ag3460. Range: 0.781-100 ng/mL