

FOXE1 Recombinant Matched Antibody Pair, PBS Only

Catalog Number: **MP01903-1**

Capture Antibody Information

Catalog Number:
85172-1-PBS
Host:
Rabbit
Isotype:
IgG
Purification Method:
Protein A purification

Clone ID:
241188E4
Reactivity:
human

Conjugate:
Unconjugated
Full name:
forkhead box E1 (thyroid transcription factor 2)
Gene ID:
2304

Detection Antibody Information

Catalog Number:
85172-2-PBS
Host:
Rabbit
Isotype:
IgG
Purification Method:
Protein A purification

Clone ID:
241188F7
Reactivity:
human
GenBank:
NM_004473

Conjugate:
Unconjugated
Full name:
forkhead box E1 (thyroid transcription factor 2)
Gene ID:
2304

Applications

Tested Applications:
Sandwich ELISA

Range:
7.81-500 pg/mL (Sandwich ELISA)

Recommended Dilutions:
It is recommended that this reagent should be titrated in each testing system to obtain optimal results.

Product Information

MP01903-1 targets FOXE1 in immunoassays as a matched antibody pair. Validated in Sandwich ELISA.

Capture antibody: FOXE1 Recombinant antibody, PBS Only (Capture) 85172-1-PBS (241188E4). 100 µg. Concentration 1 mg/mL.

Detection antibody: FOXE1 Recombinant antibody, PBS Only (Detector) 85172-2-PBS (241188F7). 100 µg. Concentration 1 mg/mL.

Unconjugated rabbit recombinant monoclonal antibody pair in PBS only storage buffer at a concentration of 1 mg/mL, ready for conjugation. Created using Proteintech's proprietary in-house recombinant technology. Recombinant production enables unrivalled batch-to-batch consistency, easy scale-up, and future security of supply.

Matched antibody pairs are designed for use in a variety of assays and platforms that require matched antibody pairs.

Antibody use should be optimized for each application and assay.

Storage

Storage:
Store at -80°C.
Storage buffer:
PBS only

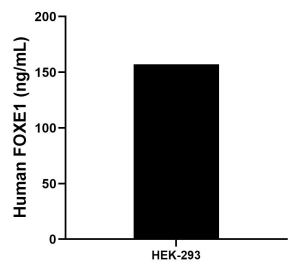
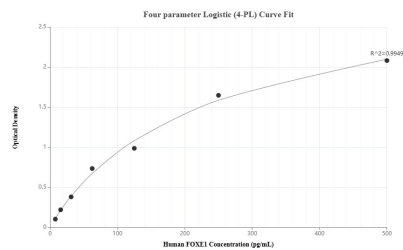
For technical support and original validation data for this product please contact:

T: 1 (888) 4PTGLAB (1-888-478-4522) (toll free in USA), or 1(312) 455-8498 (outside USA)

E: proteintech@ptglab.com
W: ptglab.com

This product is exclusively available under Proteintech Group brand and is not available to purchase from any other manufacturer.

Selected Validation Data



Sandwich ELISA standard curve of MP01903-1, Human FOXE1 Recombinant Matched Antibody Pair - PBS only. 85172-1-PBS was coated to a plate as the capture antibody and incubated with serial dilutions of standard SY01432. 85172-2-PBS was HRP conjugated as the detection antibody. Range: 7.81-500 pg/mL

The mean FOXE1 concentration was determined to be 157.10 ng/mL in HEK-293 cell extract based on a 3.3 mg/mL extract load.