

# GPR132 Recombinant Matched Antibody Pair, PBS Only

Catalog Number: **MP01915-3**

## Capture Antibody Information

**Catalog Number:**

85207-2-PBS

**Host:**

Rabbit

**Isotype:**

IgG

**Purification Method:**

Protein A purification

**Clone ID:**

242802G12

**Reactivity:**

human

**Immunogen Catalog Number:**

Eg1598

**Conjugate:**

Unconjugated

**Full name:**

G protein-coupled receptor 132

**Gene ID:**

29933

## Detection Antibody Information

**Catalog Number:**

85207-4-PBS

**Host:**

Rabbit

**Isotype:**

IgG

**Purification Method:**

Protein A purification

**Clone ID:**

242802C11

**Reactivity:**

human

**GenBank:**

BC084546

**Immunogen Catalog Number:**

Eg1598

**Conjugate:**

Unconjugated

**Full name:**

G protein-coupled receptor 132

**Gene ID:**

29933

## Applications

**Tested Applications:**

Sandwich ELISA

**Range:**

0.313-20 ng/mL (Sandwich ELISA)

**Recommended Dilutions:**

It is recommended that this reagent should be titrated in each testing system to obtain optimal results.

## Product Information

MP01915-3 targets GPR132 in immunoassays as a matched antibody pair. Validated in Sandwich ELISA.

Capture antibody: GPR132 Recombinant antibody, PBS Only (Capture) 85207-2-PBS (242802G12). 100 µg. Concentration 1 mg/mL.

Detection antibody: GPR132 Recombinant antibody, PBS Only (Detector) 85207-4-PBS (242802C11). 100 µg. Concentration 1 mg/mL.

Unconjugated rabbit recombinant monoclonal antibody pair in PBS only storage buffer at a concentration of 1 mg/mL, ready for conjugation. Created using Proteintech's proprietary in-house recombinant technology. Recombinant production enables unrivalled batch-to-batch consistency, easy scale-up, and future security of supply.

Matched antibody pairs are designed for use in a variety of assays and platforms that require matched antibody pairs.

Antibody use should be optimized for each application and assay.

## Storage

**Storage:**

Store at -80°C.

**Storage buffer:**

PBS only

For technical support and original validation data for this product please contact:

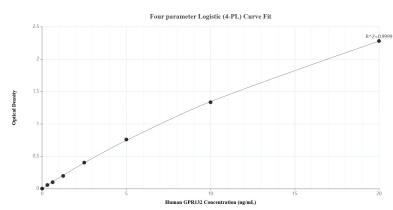
T: 1 (888) 4PTGLAB (1-888-478-4522) (toll free in USA), or 1(312) 455-8498 (outside USA)

E: [proteintech@ptglab.com](mailto:proteintech@ptglab.com)

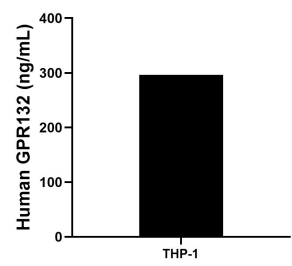
W: [ptglab.com](http://ptglab.com)

**This product is exclusively available under Proteintech Group brand and is not available to purchase from any other manufacturer.**

## Selected Validation Data



Sandwich ELISA standard curve of MP01915-3, Human GPR132 Recombinant Matched Antibody Pair - PBS only. 85207-2-PBS was coated to a plate as the capture antibody and incubated with serial dilutions of standard Eg1598. 85207-4-PBS was HRP conjugated as the detection antibody. Range: 0.313-20 ng/mL



The mean GPR132 concentration was determined to be 296.48 ng/mL in THP-1 cell extract based on a 2.90 mg/mL extract load.