

ULBP2 Recombinant Matched Antibody Pair, PBS Only

Catalog Number: **MP01920-2**

Capture Antibody Information

Catalog Number:
83709-4-PBS
Host:
Rabbit
Isotype:
IgG
Purification Method:
Protein A purification

Clone ID:
240413H4
Reactivity:
human

Conjugate:
Unconjugated
Full name:
UL16 binding protein 2
Gene ID:
80328

Detection Antibody Information

Catalog Number:
83709-3-PBS
Host:
Rabbit
Isotype:
IgG
Purification Method:
Protein A purification

Clone ID:
240413F7
Reactivity:
human
GenBank:
NM_025217.4

Conjugate:
Unconjugated
Full name:
UL16 binding protein 2
Gene ID:
80328

Applications

Tested Applications:
Cytometric bead array, Sandwich ELISA

Range:
0.781-100 ng/mL (Cytometric Bead Array)
0.156-10 ng/mL (Sandwich ELISA)

Recommended Dilutions:
It is recommended that this reagent should be titrated in each testing system to obtain optimal results.

Product Information

MP01920-2 targets ULBP2 in immunoassays as a matched antibody pair. Validated in Cytometric bead array, Sandwich ELISA.

Capture antibody: ULBP2 Recombinant antibody, PBS Only (Capture/Detector) 83709-4-PBS (240413H4). 100 µg. Concentration 1 mg/mL.

Detection antibody: ULBP2 Recombinant antibody, PBS Only (Detector) 83709-3-PBS (240413F7). 100 µg. Concentration 1 mg/mL.

Unconjugated rabbit recombinant monoclonal antibody pair in PBS only storage buffer at a concentration of 1 mg/mL, ready for conjugation. Created using Proteintech's proprietary in-house recombinant technology. Recombinant production enables unrivalled batch-to-batch consistency, easy scale-up, and future security of supply.

Matched antibody pairs are designed for use in a variety of assays and platforms that require matched antibody pairs.

Antibody use should be optimized for each application and assay.

Storage

Storage:
Store at -80°C.
Storage buffer:
PBS only

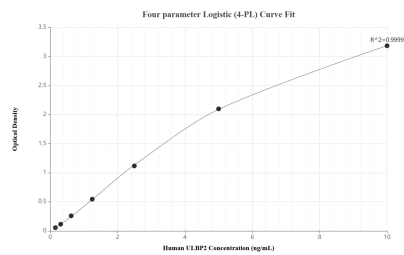
For technical support and original validation data for this product please contact:

T: 1 (888) 4PTGLAB (1-888-478-4522) (toll free in USA), or 1(312) 455-8498 (outside USA)

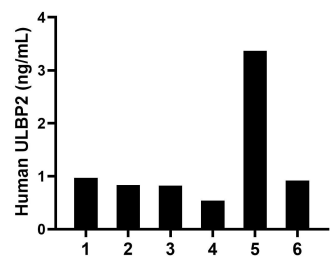
E: proteintech@ptglab.com
W: ptglab.com

This product is exclusively available under Proteintech Group brand and is not available to purchase from any other manufacturer.

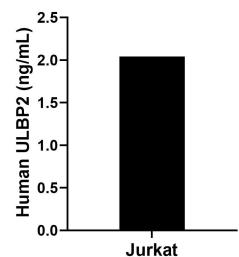
Selected Validation Data



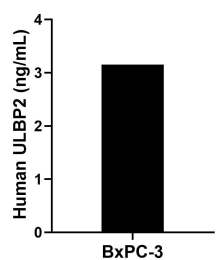
Sandwich ELISA standard curve of MP01920-2, Human ULBP2 Recombinant Matched Antibody Pair - PBS only. 83709-4-PBS was coated to a plate as the capture antibody and incubated with serial dilutions of standard Eg0858. 83709-3-PBS was HRP conjugated as the detection antibody. Range: 0.156-10 ng/mL.



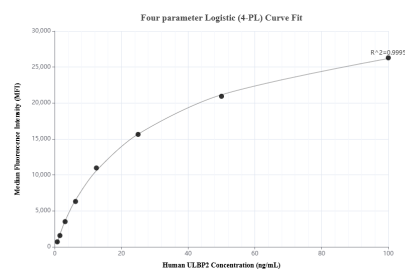
Serum of six individual healthy human donors was measured. The ULBP2 concentration of detected samples was determined to be 1.24 ng/mL with a range of 0.54-3.37 ng/mL.



Jurkat were cultured in DMEM supplemented with 10% fetal bovine serum, 2.5 mM L-glutamine, 100 U/mL penicillin, and 100 µg/mL streptomycin sulfate. An aliquot of the cell culture supernate was removed, assayed for human ULBP2, and measured 2.04 ng/mL.



The mean ULBP2 concentration was determined to be 3.15 ng/mL in BxPC-3 cell extract based on a 2.00 mg/mL extract load.



Cytometric bead array standard curve of MP01920-2, ULBP2 Recombinant Matched Antibody Pair, PBS Only. Capture antibody: 83709-4-PBS. Detection antibody: 83709-3-PBS. Standard: Eg0858. Range: 0.781-100 ng/mL.