

For Research Use Only

IBA1 Recombinant Matched Antibody Pair, PBS Only



Catalog Number:MP01922-2

Capture Antibody Information

Catalog Number:

81728-2-PBS

Host:

Rabbit

Isotype:

IgG

Purification Method:

Protein A purification

Clone ID:

242712C7

Reactivity:

human

Immunogen Catalog Number:

Ag1363

Conjugate:

Unconjugated

Full name:

allograft inflammatory factor 1

Gene ID:

199

Detection Antibody Information

Catalog Number:

81728-5-PBS

Host:

Rabbit

Isotype:

IgG

Purification Method:

Protein A purification

Clone ID:

242712D4

Reactivity:

human

GenBank:

BC009474

Immunogen Catalog Number:

Ag1363

Conjugate:

Unconjugated

Full name:

allograft inflammatory factor 1

Gene ID:

199

Applications

Tested Applications:

Sandwich ELISA

Range:

3.91-250 ng/mL (Sandwich ELISA)

Recommended Dilutions:

It is recommended that this reagent should be titrated in each testing system to obtain optimal results.

Product Information

MP01922-2 targets IBA1 in immunoassays as a matched antibody pair. Validated in Sandwich ELISA.

Capture antibody: IBA1 Recombinant monoclonal antibody, PBS Only (Capture/Detector) 81728-2-PBS (242712C7). 100 µg. Concentration 1 mg/mL.

Detection antibody: IBA1 Recombinant monoclonal antibody, PBS Only (Detector) 81728-5-PBS (242712D4). 100 µg. Concentration 1 mg/mL.

Unconjugated rabbit recombinant monoclonal antibody pair in PBS only storage buffer at a concentration of 1 mg/mL, ready for conjugation. Created using Proteintech's proprietary in-house recombinant technology. Recombinant production enables unrivalled batch-to-batch consistency, easy scale-up, and future security of supply.

Matched antibody pairs are designed for use in a variety of assays and platforms that require matched antibody pairs.

Antibody use should be optimized for each application and assay.

Storage

Storage:

Store at -80°C.

Storage buffer:

PBS only

For technical support and original validation data for this product please contact:

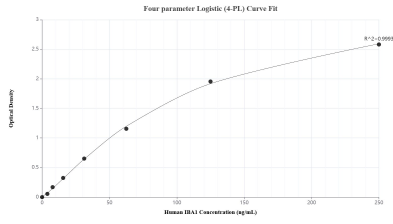
T: 1 (888) 4PTGLAB (1-888-478-4522) (toll free in USA), or 1(312) 455-8498 (outside USA)

E: proteintech@ptglab.com

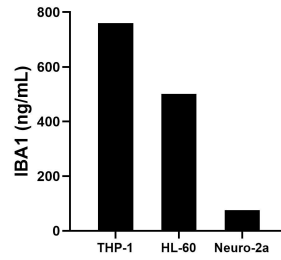
W: ptglab.com

This product is exclusively available under Proteintech Group brand and is not available to purchase from any other manufacturer.

Selected Validation Data



Sandwich ELISA standard curve of MP01922-2, Human IBA1 Recombinant Matched Antibody Pair - PBS only. 81728-2-PBS was coated to a plate as the capture antibody and incubated with serial dilutions of standard Ag1363. 81728-5-PBS was HRP conjugated as the detection antibody. Range: 3.91-250 ng/mL.



The mean IBA1 concentration was determined to be 759.57 ng/mL in THP-1 cell extract based on a 1.20 mg/mL extract load, 500.30 ng/mL in HL-60 cell extract based on a 1.20 mg/mL extract load and 75.14 ng/mL in Neuro-2a cell extract based on a 1.20 mg/mL extract load.