

For Research Use Only

Cystatin SN/CST1 Recombinant Matched Antibody Pair, PBS Only



Catalog Number:MP01926-3

Capture Antibody Information

Catalog Number:

85403-4-PBS

Host:

Rabbit

Isotype:

IgG

Purification Method:

Protein A purification

Clone ID:

242888G4

Reactivity:

human

Immunogen Catalog Number:

Ag8862

Conjugate:

Unconjugated

Full name:

cystatin SN

Gene ID:

1469

Detection Antibody Information

Catalog Number:

85403-1-PBS

Host:

Rabbit

Isotype:

IgG

Purification Method:

Protein A purification

Clone ID:

242888B3

Reactivity:

human

GenBank:

BC021225

Immunogen Catalog Number:

Ag8862

Conjugate:

Unconjugated

Full name:

cystatin SN

Gene ID:

1469

Applications

Tested Applications:

Sandwich ELISA

Range:

1.56-10 ng/mL (Sandwich ELISA)

Recommended Dilutions:

It is recommended that this reagent should be titrated in each testing system to obtain optimal results.

Product Information

MP01926-3 targets Cystatin SN/CST1 in immunoassays as a matched antibody pair. Validated in Sandwich ELISA.

Capture antibody: CST1 Recombinant antibody, PBS Only (Capture) 85403-4-PBS (242888G4). 100 µg. Concentration 1 mg/mL.

Detection antibody: Cystatin SN/CST1 Recombinant antibody, PBS Only (Capture/Detector) 85403-1-PBS (242888B3). 100 µg. Concentration 1 mg/mL.

Unconjugated rabbit recombinant monoclonal antibody pair in PBS only storage buffer at a concentration of 1 mg/mL, ready for conjugation. Created using Proteintech's proprietary in-house recombinant technology. Recombinant production enables unrivalled batch-to-batch consistency, easy scale-up, and future security of supply.

Matched antibody pairs are designed for use in a variety of assays and platforms that require matched antibody pairs.

Antibody use should be optimized for each application and assay.

Storage

Storage:

Store at -80°C.

Storage buffer:

PBS only

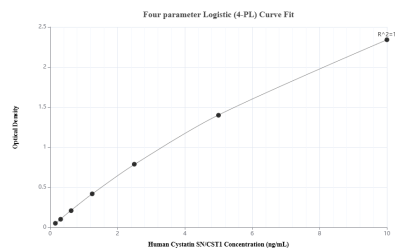
For technical support and original validation data for this product please contact:

T: 1 (888) 4PTGLAB (1-888-478-4522) (toll free in USA), or 1(312) 455-8498 (outside USA)

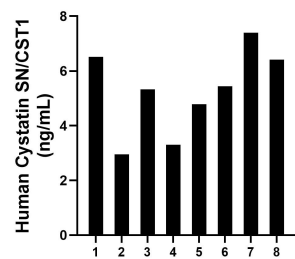
E: proteintech@ptglab.com
W: ptglab.com

This product is exclusively available under Proteintech Group brand and is not available to purchase from any other manufacturer.

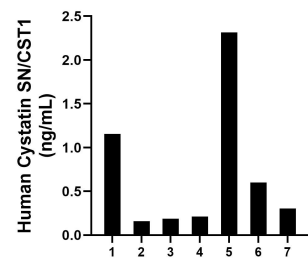
Selected Validation Data



Sandwich ELISA standard curve of MP01926-3, Human Cystatin SN/CST1 Recombinant Matched Antibody Pair - PBS only. 85403-4-PBS was coated to a plate as the capture antibody and incubated with serial dilutions of standard Ag8862. 85403-1-PBS was HRP conjugated as the detection antibody. Range: 1.56-10 ng/mL



Serum of eight individual healthy human donors was measured. The human Cystatin SN/CST1 concentration of detected samples was determined to be 5.27 ng/mL with a range of 2.95 - 7.40 ng/mL



Urine of seven individual healthy human donors was measured. The human Cystatin SN/CST1 concentration of detected samples was determined to be 0.70 ng/mL with a range of 0.16 - 2.31 ng/mL