

For Research Use Only



CLYBL Recombinant Matched Antibody Pair, PBS Only

Catalog Number:MP01930-3

Capture Antibody Information

Catalog Number:
85399-5-PBS

Host:
Rabbit

Isotype:
IgG

Purification Method:
Protein A purification

Clone ID:
242785G2

Reactivity:
human

Immunogen Catalog Number:
Ag11283

Conjugate:
Unconjugated

Full name:
citrate lyase beta like

Gene ID:
171425

Detection Antibody Information

Catalog Number:
85399-3-PBS

Host:
Rabbit

Isotype:
IgG

Purification Method:
Protein A purification

Clone ID:
242785G1

Reactivity:
human

GenBank:
BC034360

Immunogen Catalog Number:
Ag11283

Conjugate:
Unconjugated

Full name:
citrate lyase beta like

Gene ID:
171425

Applications

Tested Applications:
Sandwich ELISA

Range:
0.781-50 ng/mL (Sandwich ELISA)

Recommended Dilutions:
It is recommended that this reagent should be titrated in each testing system to obtain optimal results.

Product Information

MP01930-3 targets CLYBL in immunoassays as a matched antibody pair. Validated in Sandwich ELISA.

Capture antibody: CLYBL Recombinant antibody, PBS Only (Capture) 85399-5-PBS (242785G2). 100 µg. Concentration 1 mg/mL.

Detection antibody: CLYBL Recombinant antibody, PBS Only (Detector) 85399-3-PBS (242785G1). 100 µg. Concentration 1 mg/mL.

Unconjugated rabbit recombinant monoclonal antibody pair in PBS only storage buffer at a concentration of 1 mg/mL, ready for conjugation. Created using Proteintech's proprietary in-house recombinant technology. Recombinant production enables unrivalled batch-to-batch consistency, easy scale-up, and future security of supply.

Matched antibody pairs are designed for use in a variety of assays and platforms that require matched antibody pairs.

Antibody use should be optimized for each application and assay.

Storage

Storage:
Store at -80°C.
Storage buffer:
PBS only

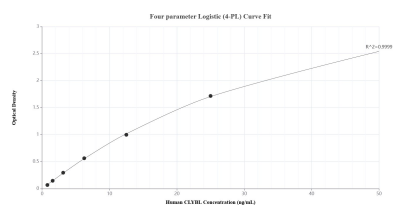
For technical support and original validation data for this product please contact:

T: 1 (888) 4PTGLAB (1-888-478-4522) (toll free in USA), or 1(312) 455-8498 (outside USA)

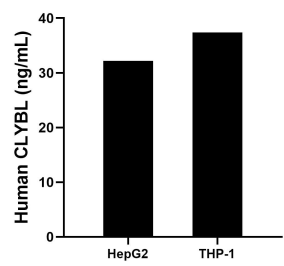
E: proteintech@ptglab.com
W: ptglab.com

This product is exclusively available under Proteintech Group brand and is not available to purchase from any other manufacturer.

Selected Validation Data



Sandwich ELISA standard curve of MP01930-3, Human CLYBL Recombinant Matched Antibody Pair - PBS only. 85399-5-PBS was coated to a plate as the capture antibody and incubated with serial dilutions of standard Ag11283. 85399-3-PBS was HRP conjugated as the detection antibody. Range: 0.781-50 ng/mL.



The mean CLYBL concentration was determined to be 32.18 ng/mL in HepG2 cell extract based on a 1.80 mg/mL extract load and 37.35 ng/mL in THP-1 cell extract based on a 1.50 mg/mL extract load.