

Cytochrome c Recombinant Matched Antibody Pair, PBS Only

Catalog Number: **MP01934-3**

Capture Antibody Information

Catalog Number:
83276-5-PBSHost:
RabbitIsotype:
IgGPurification Method:
Protein A purificationClone ID:
230503G9Reactivity:
humanImmunogen Catalog Number:
Ag1455Conjugate:
UnconjugatedFull name:
cytochrome c, somaticGene ID:
54205

Detection Antibody Information

Catalog Number:
83276-6-PBSHost:
RabbitIsotype:
IgGPurification Method:
Protein A purificationClone ID:
230503C12Reactivity:
humanGenBank:
BC009578Immunogen Catalog Number:
Ag1455Conjugate:
UnconjugatedFull name:
cytochrome c, somaticGene ID:
54205

Applications

Tested Applications:
Sandwich ELISARange:
0.391-25 ng/mL (Sandwich ELISA)**Recommended Dilutions:**
It is recommended that this reagent should be titrated in each testing system to obtain optimal results.

Product Information

MP01934-3 targets Cytochrome c in immunoassays as a matched antibody pair. Validated in Sandwich ELISA.

Capture antibody: Cytochrome c Recombinant antibody, PBS Only (Capture/Detector) 83276-5-PBS (230503G9). 100 µg. Concentration 1 mg/mL.

Detection antibody: Cytochrome c Recombinant antibody, PBS Only (Detector) 83276-6-PBS (230503C12). 100 µg. Concentration 1 mg/mL.

Unconjugated rabbit recombinant monoclonal antibody pair in PBS only storage buffer at a concentration of 1 mg/mL, ready for conjugation. Created using Proteintech's proprietary in-house recombinant technology. Recombinant production enables unrivalled batch-to-batch consistency, easy scale-up, and future security of supply.

Matched antibody pairs are designed for use in a variety of assays and platforms that require matched antibody pairs.

Antibody use should be optimized for each application and assay.

Storage

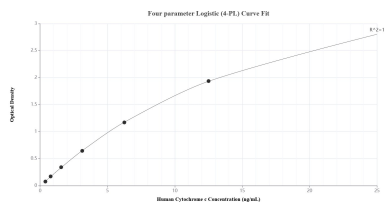
Storage:
Store at -80°C.
Storage buffer:
PBS only

For technical support and original validation data for this product please contact:

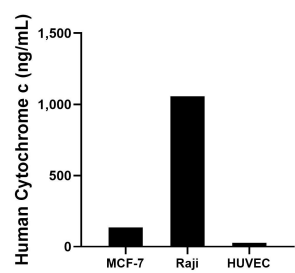
T: 1 (888) 4PTGLAB (1-888-478-4522) (toll free in USA), or 1(312) 455-8498 (outside USA)

E: proteintech@ptglab.com
W: ptglab.com**This product is exclusively available under Proteintech Group brand and is not available to purchase from any other manufacturer.**

Selected Validation Data



Sandwich ELISA standard curve of MP01934-3, Human Cytochrome c Recombinant Matched Antibody Pair - PBS only. 83276-5-PBS was coated to a plate as the capture antibody and incubated with serial dilutions of standard Ag1455. 83276-6-PBS was HRP conjugated as the detection antibody. Range: 0.391-25 ng/mL



The mean Cytochrome c concentration was determined to be 135.89 ng/mL in MCF-7 cell extract based on a 1.30 mg/mL extract load, 1,056.51 ng/mL in Raji cell extract based on a 3.00 mg/mL extract load and 26.74 ng/mL in HUVEC cell extract based on a 1.40 mg/mL extract load.