

# RIOK3 Recombinant Matched Antibody Pair, PBS Only

Catalog Number: **MP01940-2**

## Capture Antibody Information

**Catalog Number:**

85449-3-PBS

**Host:**

Rabbit

**Isotype:**

IgG

**Purification Method:**

Protein A purification

**Clone ID:**

242996F11

**Reactivity:**

human

**Immunogen Catalog Number:**

Ag4497

**Conjugate:**

Unconjugated

**Full name:**

RIO kinase 3 (yeast)

**Gene ID:**

8780

## Detection Antibody Information

**Catalog Number:**

85449-2-PBS

**Host:**

Rabbit

**Isotype:**

IgG

**Purification Method:**

Protein A purification

**Clone ID:**

242996E11

**Reactivity:**

human

**GenBank:**

BC039729

**Immunogen Catalog Number:**

Ag4497

**Conjugate:**

Unconjugated

**Full name:**

RIO kinase 3 (yeast)

**Gene ID:**

8780

## Applications

**Tested Applications:**

Cytometric bead array, Sandwich ELISA

**Range:**

0.781-100 ng/mL (Cytometric Bead Array)  
97.7-6250 pg/mL (Sandwich ELISA)

**Recommended Dilutions:**

It is recommended that this reagent should be titrated in each testing system to obtain optimal results.

## Product Information

MP01940-2 targets RIOK3 in immunoassays as a matched antibody pair. Validated in Cytometric bead array, Sandwich ELISA.

Capture antibody: RIOK3 Recombinant antibody, PBS Only (Capture) 85449-3-PBS (242996F11). 100 µg. Concentration 1 mg/mL.

Detection antibody: RIOK3 Recombinant antibody, PBS Only (Detector) 85449-2-PBS (242996E11). 100 µg. Concentration 1 mg/mL.

Unconjugated rabbit recombinant monoclonal antibody pair in PBS only storage buffer at a concentration of 1 mg/mL, ready for conjugation. Created using Proteintech's proprietary in-house recombinant technology. Recombinant production enables unrivalled batch-to-batch consistency, easy scale-up, and future security of supply.

Matched antibody pairs are designed for use in a variety of assays and platforms that require matched antibody pairs.

Antibody use should be optimized for each application and assay.

## Storage

**Storage:**

Store at -80°C.

**Storage buffer:**

PBS only

For technical support and original validation data for this product please contact:

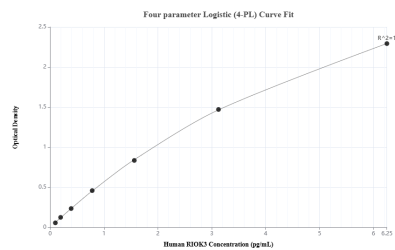
T: 1 (888) 4PTGLAB (1-888-478-4522) (toll free in USA), or 1(312) 455-8498 (outside USA)

E: [proteintech@ptglab.com](mailto:proteintech@ptglab.com)

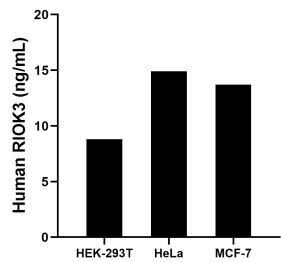
W: [ptglab.com](http://ptglab.com)

**This product is exclusively available under Proteintech Group brand and is not available to purchase from any other manufacturer.**

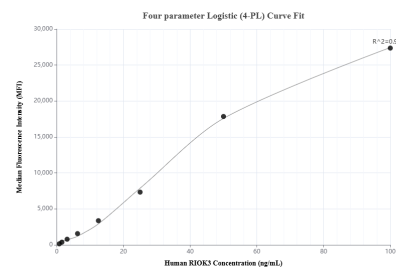
## Selected Validation Data



Sandwich ELISA standard curve of MP01940-2, Human R1OK3 Recombinant Matched Antibody Pair - PBS only. 85449-3-PBS was coated to a plate as the capture antibody and incubated with serial dilutions of standard Ag4497. 85449-2-PBS was HRP conjugated as the detection antibody. Range: 97.7-6250 pg/mL



The mean R1OK3 concentration was determined to be 8.12 ng/mL in HEK-293T cell extract based on a 3.2 mg/mL extract load, 14.92 ng/mL in HeLa cell extract based on a 2.1 mg/mL extract load and 13.7 ng/mL in MCF-7 cell extract based on a 1.3 mg/mL extract load.



Cytometric bead array standard curve of MP01940-2, R1OK3 Recombinant Matched Antibody Pair, PBS Only. Capture antibody: 85449-3-PBS. Detection antibody: 85449-2-PBS. Standard: Ag4497. Range: 0.781-100 ng/mL