

# GHR Recombinant Matched Antibody Pair, PBS Only

Catalog Number: **MP01942-3**

## Capture Antibody Information

Catalog Number:  
85437-5-PBS  
Host:  
Rabbit  
Isotype:  
IgG  
Purification Method:  
Protein A purification

Clone ID:  
242896B7  
Reactivity:  
human  
Immunogen Catalog Number:  
Eg3027

Conjugate:  
Unconjugated  
Full name:  
GH binding protein  
Gene ID:  
2690

## Detection Antibody Information

Catalog Number:  
85437-4-PBS  
Host:  
Rabbit  
Isotype:  
IgG  
Purification Method:  
Protein A purification

Clone ID:  
242896F3  
Reactivity:  
human  
GenBank:  
NM\_000163.5  
Immunogen Catalog Number:  
Eg3027

Conjugate:  
Unconjugated  
Full name:  
GH binding protein  
Gene ID:  
2690

## Applications

Tested Applications:  
Sandwich ELISA

Range:  
78.1-5000 pg/mL (Sandwich ELISA)

Recommended Dilutions:  
It is recommended that this reagent should be titrated in each testing system to obtain optimal results.

## Product Information

MP01942-3 targets GHR in immunoassays as a matched antibody pair. Validated in Sandwich ELISA.

Capture antibody: GHR Recombinant antibody, PBS Only (Capture) 85437-5-PBS (242896B7). 100 µg. Concentration 1 mg/mL.

Detection antibody: GHR Recombinant antibody, PBS Only (Detector) 85437-4-PBS (242896F3). 100 µg. Concentration 1 mg/mL.

Unconjugated rabbit recombinant monoclonal antibody pair in PBS only storage buffer at a concentration of 1 mg/mL, ready for conjugation. Created using Proteintech's proprietary in-house recombinant technology. Recombinant production enables unrivalled batch-to-batch consistency, easy scale-up, and future security of supply.

Matched antibody pairs are designed for use in a variety of assays and platforms that require matched antibody pairs.

Antibody use should be optimized for each application and assay.

## Storage

Storage:  
Store at -80°C.  
Storage buffer:  
PBS only

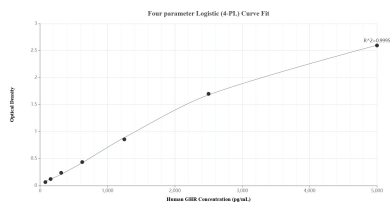
For technical support and original validation data for this product please contact:

T: 1 (888) 4PTGLAB (1-888-478-4522) (toll free in USA), or 1(312) 455-8498 (outside USA)

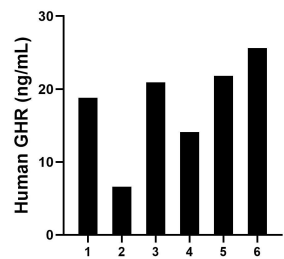
E: [proteintech@ptglab.com](mailto:proteintech@ptglab.com)  
W: [ptglab.com](http://ptglab.com)

**This product is exclusively available under Proteintech Group brand and is not available to purchase from any other manufacturer.**

## Selected Validation Data



Sandwich ELISA standard curve of MP01942-3, Human GHR Recombinant Matched Antibody Pair - PBS only. 85437-5-PBS was coated to a plate as the capture antibody and incubated with serial dilutions of standard Eg3027. 85437-4-PBS was HRP conjugated as the detection antibody. Range: 78.1-5000 pg/mL.



Serum of six individual healthy human donors was measured. The GHR concentration of detected samples was determined to be 18.0 ng/mL with a range of 6.6-25.6 ng/mL.