

# PEX1 Recombinant Matched Antibody Pair, PBS Only

Catalog Number: **MP01946-3**

## Capture Antibody Information

**Catalog Number:**

85429-1-PBS

**Host:**

Rabbit

**Isotype:**

IgG

**Purification Method:**

Protein A purification

**Clone ID:**

242994C9

**Reactivity:**

human

**Immunogen Catalog Number:**

Ag4623

**Conjugate:**

Unconjugated

**Full name:**

peroxisomal biogenesis factor 1

**Gene ID:**

5189

## Detection Antibody Information

**Catalog Number:**

85429-5-PBS

**Host:**

Rabbit

**Isotype:**

IgG

**Purification Method:**

Protein A purification

**Clone ID:**

242994A4

**Reactivity:**

human

**GenBank:**

BC035575

**Immunogen Catalog Number:**

Ag4623

**Conjugate:**

Unconjugated

**Full name:**

peroxisomal biogenesis factor 1

**Gene ID:**

5189

## Applications

**Tested Applications:**

Sandwich ELISA

**Range:**

3.13-200 ng/mL (Sandwich ELISA)

**Recommended Dilutions:**

It is recommended that this reagent should be titrated in each testing system to obtain optimal results.

## Product Information

MP01946-3 targets PEX1 in immunoassays as a matched antibody pair. Validated in Sandwich ELISA.

Capture antibody: PEX1 Recombinant antibody, PBS Only (Capture) 85429-1-PBS (242994C9). 100 µg. Concentration 1 mg/mL.

Detection antibody: PEX1 Recombinant antibody, PBS Only (Detector) 85429-5-PBS (242994A4). 100 µg. Concentration 1 mg/mL.

Unconjugated rabbit recombinant monoclonal antibody pair in PBS only storage buffer at a concentration of 1 mg/mL, ready for conjugation. Created using Proteintech's proprietary in-house recombinant technology. Recombinant production enables unrivalled batch-to-batch consistency, easy scale-up, and future security of supply.

Matched antibody pairs are designed for use in a variety of assays and platforms that require matched antibody pairs.

Antibody use should be optimized for each application and assay.

## Storage

**Storage:**

Store at -80°C.

**Storage buffer:**

PBS only

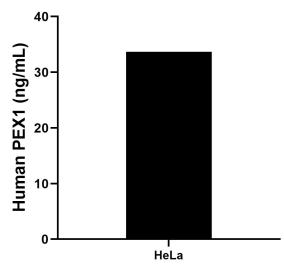
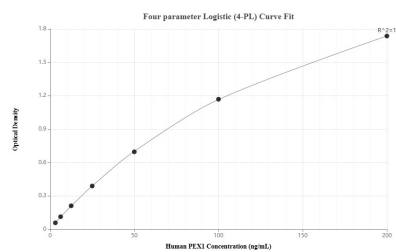
For technical support and original validation data for this product please contact:

T: 1 (888) 4PTGLAB (1-888-478-4522) (toll free in USA), or 1(312) 455-8498 (outside USA)

E: [proteintech@ptglab.com](mailto:proteintech@ptglab.com)  
W: [ptglab.com](http://ptglab.com)

**This product is exclusively available under Proteintech Group brand and is not available to purchase from any other manufacturer.**

## Selected Validation Data



Sandwich ELISA standard curve of MP01946-3, Human PEX1 Recombinant Matched Antibody Pair - PBS only. 85429-1-PBS was coated to a plate as the capture antibody and incubated with serial dilutions of standard Ag4623. 85429-5-PBS was HRP conjugated as the detection antibody. Range: 3.13-200 ng/mL

The mean PEX1 concentration was determined to be 33.68 ng/mL in HeLa cell extract based on a 2.1 mg/mL extract load.