

BMPR2 Recombinant Matched Antibody Pair, PBS Only

Catalog Number: **MP01947-3**

Capture Antibody Information

Catalog Number:
85433-2-PBS
Host:
Rabbit
Isotype:
IgG
Purification Method:
Protein A purification

Clone ID:
242826B12
Reactivity:
human
Immunogen Catalog Number:
Ag5868

Conjugate:
Unconjugated
Full name:
bone morphogenetic protein receptor, type II (serine/threonine kinase)
Gene ID:
659

Detection Antibody Information

Catalog Number:
85433-3-PBS
Host:
Rabbit
Isotype:
IgG
Purification Method:
Protein A purification

Clone ID:
242826D3
Reactivity:
human
GenBank:
BC052985
Immunogen Catalog Number:
Ag5868

Conjugate:
Unconjugated
Full name:
bone morphogenetic protein receptor, type II (serine/threonine kinase)
Gene ID:
659

Applications

Tested Applications:
Sandwich ELISA

Range:
0.625-40 ng/mL (Sandwich ELISA)

Recommended Dilutions:
It is recommended that this reagent should be titrated in each testing system to obtain optimal results.

Product Information

MP01947-3 targets BMPR2 in immunoassays as a matched antibody pair. Validated in Sandwich ELISA.

Capture antibody: BMPR2 Recombinant antibody, PBS Only (Capture) 85433-2-PBS (242826B12). 100 µg. Concentration 1 mg/mL.

Detection antibody: BMPR2 Recombinant antibody, PBS Only (Capture/Detector) 85433-3-PBS (242826D3). 100 µg. Concentration 1 mg/mL.

Unconjugated rabbit recombinant monoclonal antibody pair in PBS only storage buffer at a concentration of 1 mg/mL, ready for conjugation. Created using Proteintech's proprietary in-house recombinant technology. Recombinant production enables unrivalled batch-to-batch consistency, easy scale-up, and future security of supply.

Matched antibody pairs are designed for use in a variety of assays and platforms that require matched antibody pairs.

Antibody use should be optimized for each application and assay.

Storage

Storage:
Store at -80°C.
Storage buffer:
PBS only

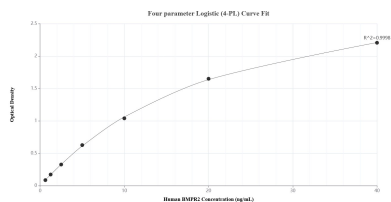
For technical support and original validation data for this product please contact:

T: 1 (888) 4PTGLAB (1-888-478-4522) (toll free in USA), or 1(312) 455-8498 (outside USA)

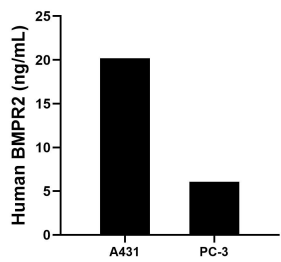
E: proteintech@ptglab.com
W: ptglab.com

This product is exclusively available under Proteintech Group brand and is not available to purchase from any other manufacturer.

Selected Validation Data



Sandwich ELISA standard curve of MP01947-3, Human BMPR2 Recombinant Matched Antibody Pair - PBS only. 85433-2-PBS was coated to a plate as the capture antibody and incubated with serial dilutions of standard Ag5868. 85433-3-PBS was HRP conjugated as the detection antibody. Range: 0.625-40 ng/mL



The mean BMPR2 concentration was determined to be 20.20 ng/mL in A431 cell extract based on a 2.70 mg/mL extract load and 6.06 ng/mL in PC-3 cell extract based on a 1.30 mg/mL extract load.