

CTR9 Recombinant Matched Antibody Pair, PBS Only

Catalog Number: **MP01950-1**

Capture Antibody Information

Catalog Number:
85432-2-PBS
Host:
Rabbit
Isotype:
IgG
Purification Method:
Protein A purification

Clone ID:
242949D8
Reactivity:
human
Immunogen Catalog Number:
Ag15690

Conjugate:
Unconjugated
Full name:
Ctr9, Paf1/RNA polymerase II complex component, homolog (S. cerevisiae)
Gene ID:
9646

Detection Antibody Information

Catalog Number:
85432-1-PBS
Host:
Rabbit
Isotype:
IgG
Purification Method:
Protein A purification

Clone ID:
242949D12
Reactivity:
human
GenBank:
BC058914
Immunogen Catalog Number:
Ag15690

Conjugate:
Unconjugated
Full name:
Ctr9, Paf1/RNA polymerase II complex component, homolog (S. cerevisiae)
Gene ID:
9646

Applications

Tested Applications:
Cytometric bead array, Sandwich ELISA

Range:
0.781-100 ng/mL (Cytometric Bead Array)
1.56-100 ng/mL (Sandwich ELISA)

Recommended Dilutions:
It is recommended that this reagent should be titrated in each testing system to obtain optimal results.

Product Information

MP01950-1 targets CTR9 in immunoassays as a matched antibody pair. Validated in Cytometric bead array, Sandwich ELISA.

Capture antibody: CTR9 Recombinant antibody, PBS Only (Capture) 85432-2-PBS (242949D8). 100 µg. Concentration 1 mg/mL.

Detection antibody: CTR9 Recombinant antibody, PBS Only (Detector) 85432-1-PBS (242949D12). 100 µg. Concentration 1 mg/mL.

Unconjugated rabbit recombinant monoclonal antibody pair in PBS only storage buffer at a concentration of 1 mg/mL, ready for conjugation. Created using Proteintech's proprietary in-house recombinant technology. Recombinant production enables unrivalled batch-to-batch consistency, easy scale-up, and future security of supply.

Matched antibody pairs are designed for use in a variety of assays and platforms that require matched antibody pairs.

Antibody use should be optimized for each application and assay.

Storage

Storage:
Store at -80°C.
Storage buffer:
PBS only

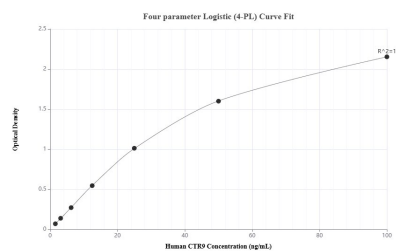
For technical support and original validation data for this product please contact:

T: 1 (888) 4PTGLAB (1-888-478-4522) (toll free in USA), or 1(312) 455-8498 (outside USA)

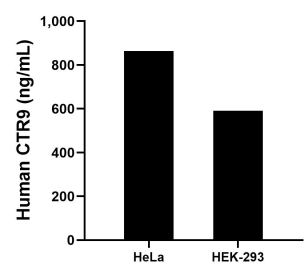
E: proteintech@ptglab.com
W: ptglab.com

This product is exclusively available under Proteintech Group brand and is not available to purchase from any other manufacturer.

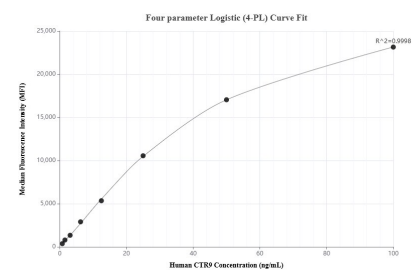
Selected Validation Data



Sandwich ELISA standard curve of MP01950-1, Human CTR9 Recombinant Matched Antibody Pair - PBS only. 85432-2-PBS was coated to a plate as the capture antibody and incubated with serial dilutions of standard Ag15690. 85432-1-PBS was HRP conjugated as the detection antibody. Range: 1.56-100 ng/mL



The mean CTR9 concentration was determined to be 864.35 ng/mL in HeLa cell extract based on a 4.5 mg/mL extract load and 590.41 ng/mL in HEK-293 cell extract based on a 2.1 mg/mL extract load.



Cytometric bead array standard curve of MP01950-1, CTR9 Recombinant Matched Antibody Pair, PBS Only. Capture antibody: 85432-2-PBS. Detection antibody: 85432-1-PBS. Standard: Ag15690. Range: 0.781-100 ng/mL